

# YEELIGHT PRO

WHOLE HOUSE SMART LIGHTING

Premium Customized Lighting  
[www.yeelight.com](http://www.yeelight.com)

Follow Yeelight on



# CONTENTS

## 01 Company Profile

Company Profile .....	01
Our Vision .....	03
About Brand .....	04
Global Partners .....	05
Patent Situation .....	07

## 03 Design

Common Misconceptions .....	17
Basic concept .....	18
Five Steps to Smart Lighting Design .....	22
Planing Design Service .....	23

## 05 Products

Product Series Intro .....	37
Yeelight Rooflight .....	41
X-Series Products .....	49
U-Series Products .....	51
P-Series Magnetic Products .....	55
S-Series Products .....	59
E-Series Products .....	83
D-Series Products .....	109
M-Series Products .....	113
Smart Control .....	119

## 02 Services

Intelligent Lighting Customization Service .....	13
Service Process .....	14
Mission Statement .....	14

## 04 Smart Tech

Traditional Wired System vs Yeelight Pro Wireless System .....	27
Precision light control for perfect lighting scenes .....	29
Fast and Stable Wireless Control .....	30
Flexible and Variable Control .....	31
Reliable All-Digital System .....	33

## 06 Case

Beijing DaXing International Airport .....	139
Beijing Parent-child Grand Flat ...	140
Suzhou Classical Garden .....	141
Dynaudio Brand Store .....	142
LINJOY Design Center .....	143
Chendu Old House Rehabilitation Program .....	144
Hefei Smart Home .....	145
Lijiang Nursing Home .....	146

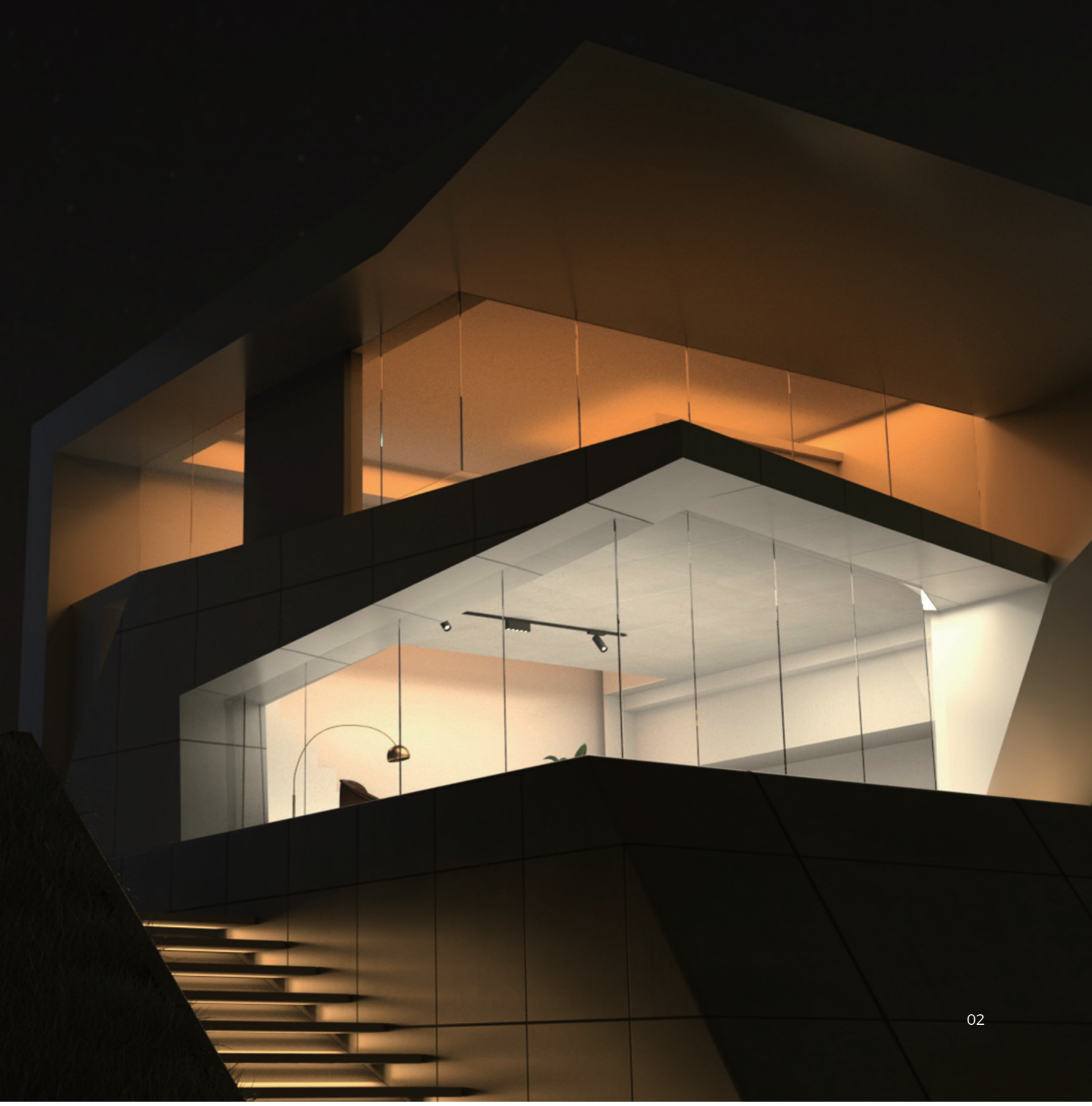
# COMPANY PROFILE

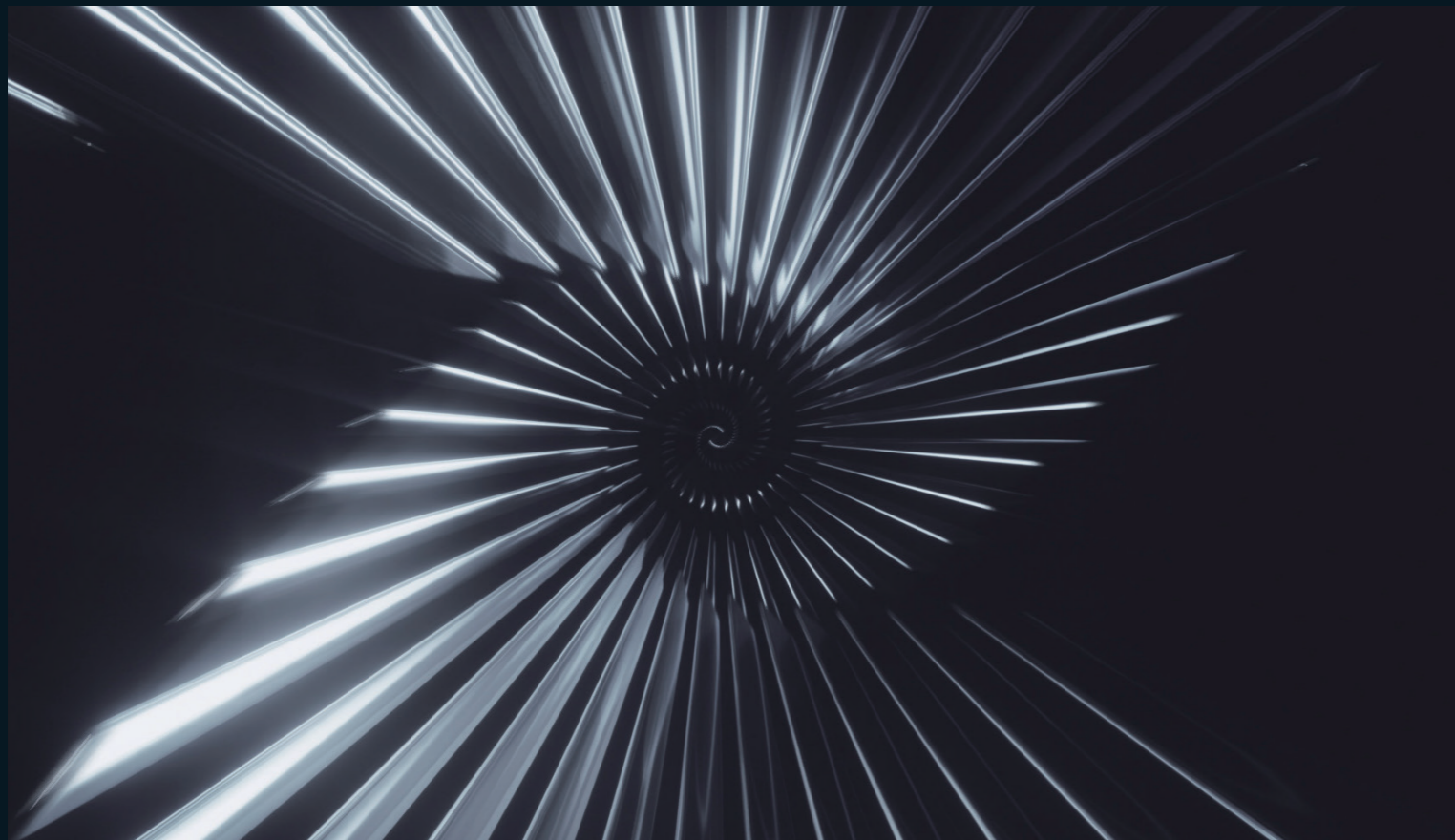
— FOCUS ON LIGHTING FOR 10 YEARS

Yeelight, founded in 2012, is the pioneer in the smart lighting industry and is re-garded as the first runner in China.

Since its inception, we go above and beyond in the development of smart lighting. Investing in smart interaction, lighting technology, and industrial design, we pro-mote the lighting revolution with smart technology and enable smart light to shine whenever needed.

In 2020, Yeelight launched the Yeelight Pro smart lighting products for the entire house and introduced the Premium Intelligent Lighting Customization Service. Yeelight also accelerated the offline layout of Yeelight smart lighting customization experience stores over 400, aiming to provide better smart lighting customization experience for more users.

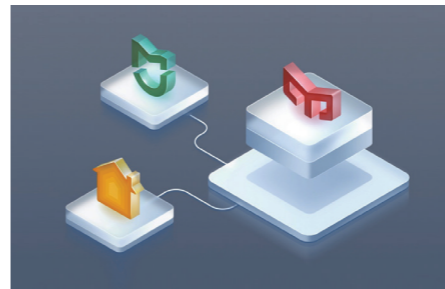




## OUR VISION

“ Lead the industrial revolution by igniting the power of smart lighting. ”  
Unleash the greatness of lighting design with the power of smart technology.

## ABOUT BRAND



### SMART TECH

Yeelight has never ceased inventing and creating smart technologies. Our devices benefit significantly from AI technology, including CRI, illuminance, BLE MESH, and WIFI, and are interoperable with the world's most popular IoT systems, including Apple HomeKit, Google Home, Amazon Alexa, and Mi Home. Our efforts in the area of intelligent interaction continue to fuel the growth of the smart lighting industry.



### OPTICAL EXPERT

As a practitioner of superb lighting design, Yeelight has a self-sufficient group of senior lighting designers and optical engineers, ensuring our users healthy and professionally designed lights. With our products receiving the world's first "Eye Comfort Display (OLED) -Low Blue Light, Flicker Free" Certification from TÜV Rheinland, Yeelight continues to set the industry benchmarks in the core indicators such as CRI, illuminance, and luminance.



### DASHING DESIGN

Yeelight has a strong industrial design team to deliver well-crafted products which are honored with plentiful international design awards, including iF Gold Award, Red Dot Design Award, Japan's Good Design Award, U. S. International Design Excellence Awards, and other globally dominant industrial design awards. Also, in 2020, Yeelight was listed in the 100 brands in iF World Design Index.

GLOBAL USER DISTRIBUTION

80M<sup>+</sup>

Smart Lighting Shipments Worldwide

14M<sup>+</sup>

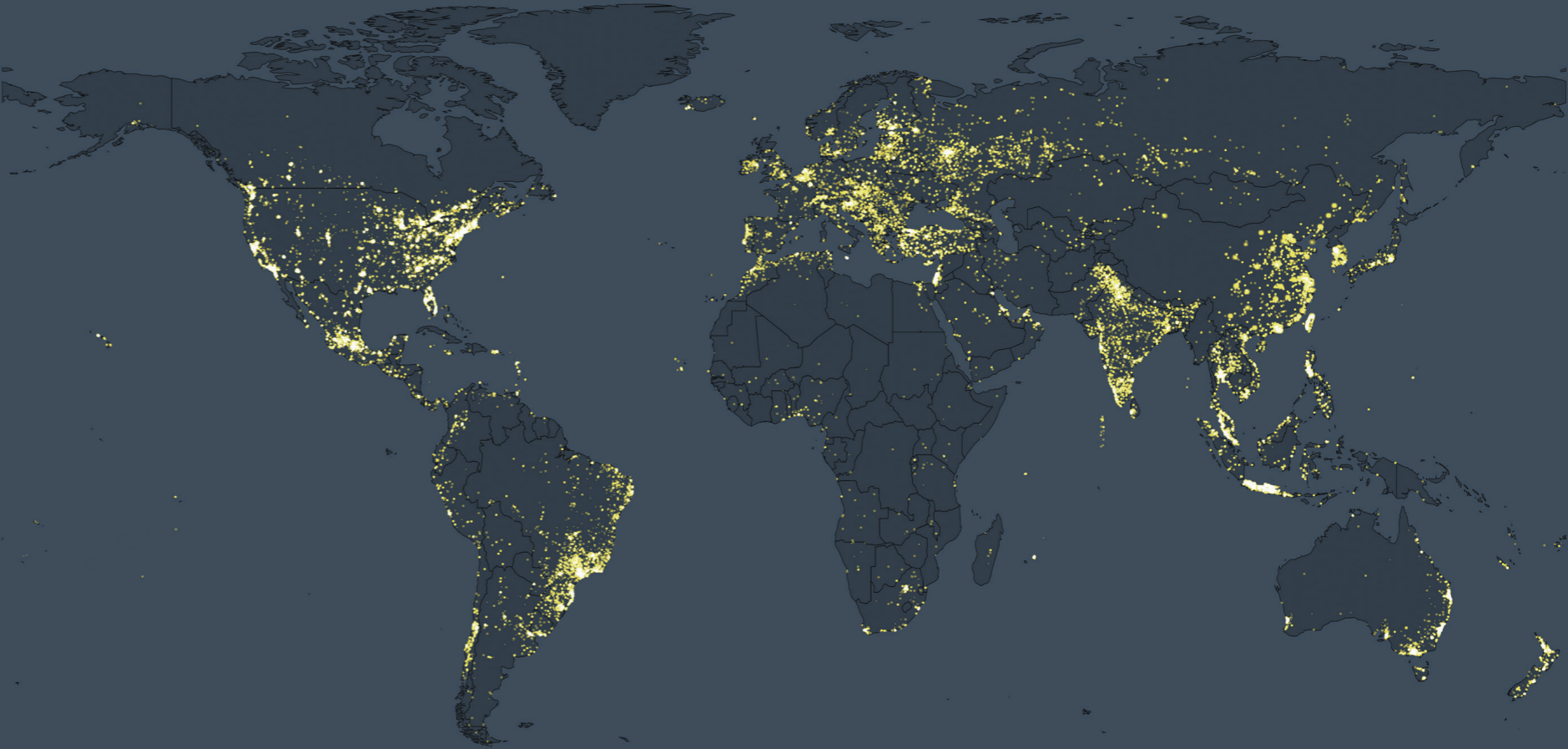
Global User Base

10M<sup>+</sup>

Daily Active Devices

200<sup>+</sup>

Countries and Regions Covered



GLOBAL PARTNERS

Yeelight has partnered extensively with Apple, Google, Amazon, Xiaomi, Microsoft, Samsung and other internationally renowned high-tech companies, supporting all mainstream smart ecosystems worldwide, and one of the first smart lighting brand in China to support Google Assistant and Amazon Alexa.

Works with Apple Home

amazon alexa

LOOCK

R A Z E R

mijia

微软小冰

WORKS WITH kakaohome

Works with SmartThings

OVERWOLF

CRESTRON

matter

Работает с Алисой

小京鱼

Control4

天猫精灵

Hisense

Haier 海尔

works with Ok Google

ACIGA 安心加云联

NAVER Clova

KNX

SONOS

Rokid

vanke

DUEROS

PATENTS SITUATION

805 published patents and patent applications:

303<sup>+</sup>

Invention patents and  
invention patent applications

286<sup>+</sup>

Utility model patents

216<sup>+</sup>

ID patents



YEELIGHT PRO WHOLE HOUSE SMART LIGHTING

Premium smart lighting for a Smart home





reddot winner 2022  
interface design



reddot winner 2020



reddot award 2019  
winner



TOP 100  
China  
2019 – 2023



TOP10  
Lighting  
2016 – 2020



We are honored with 30+ globally dominant design awards, including the iF Gold Award (Germany), the Red Dot Design Award (Germany), Japan's Good Design Award, and the U.S. International Design Excellence Awards.

Yeelight was listed among the top 10 lighting brands in the iF World Design Index in 2022.



## 02 SERVICE

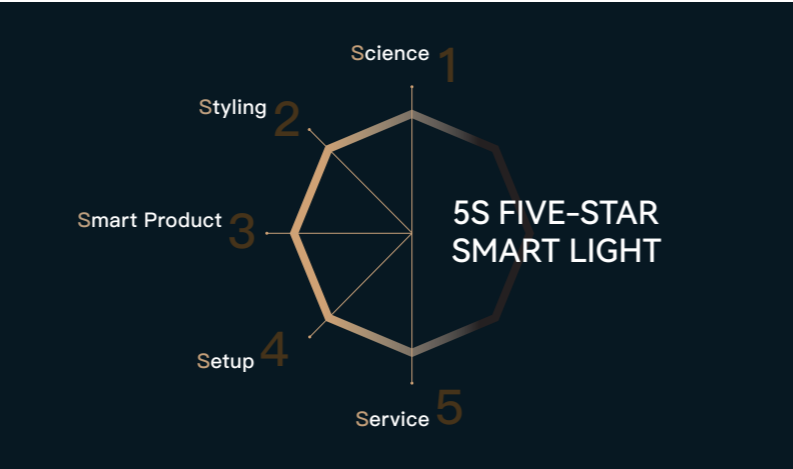
Smart Experience  
Personalized Design  
Smart Products  
Fast Installation and debugging  
Worry-Free Service





# PREMIUM PERSONALIZED SERVICE OF SMART LIGHTING

Yeelight provides personalized lighting solutions to cater users’ specific needs for whole house smart lighting. The “one-stop, all-in-one, one-to-one” service concept gives Yeelight the strength to provide users a premium experience from smart lighting experience in store, personalized smart solution, professional smart lights, lightning-speed install, and scene-based setting, to worry-free after-sales service, delivering a considerate, hustle-free, and worry-free shopping experience.



# FIVE-STAR INTELLIGENT LIGHTING CUSTOMIZATION SERVICE

**01** step  
Smart Lighting Experience

**03** step  
Concept and Budget

**05** step  
Budget and Contract

**07** step  
24/7 After-Sales Service

**02** step  
Pre-design Communication

**04** step  
Deposit and Plan Development

**06** step  
Installation and Debugging

## SERVICE CONCEPT



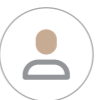
### One-stop Service

With Yeelight, users can have one-stop service from live scene experience to after-sales service, enjoying smart light in the most worry-free way. “What you see is what you get” is the core of our smart lighting shopping experience.



### All-in-one Service

Yeelight has sophisticated smart system and smart products in the industry, lighting design expertise, and professional installation team. Our all-in-one service ensures the service quality of each link, providing users with a superb and stress-free experience.



### One-to-one service

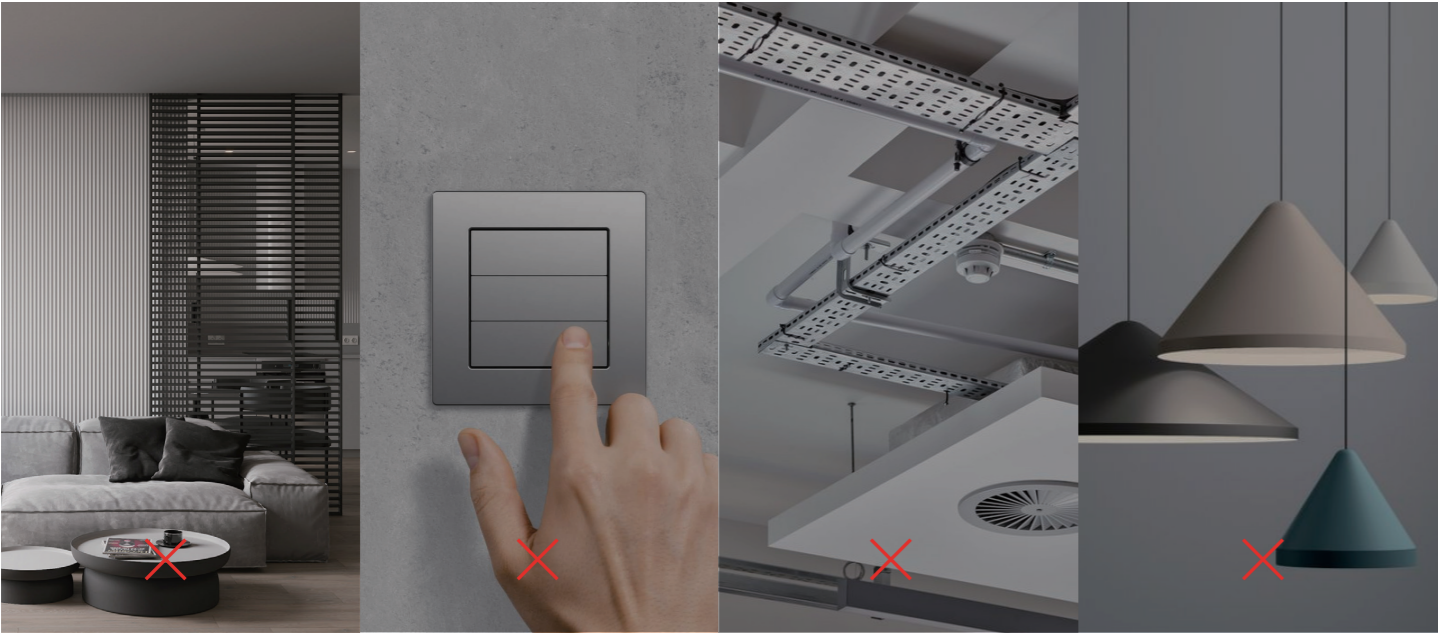
Yeelight caters every customer’s special needs with exclusive, personalized design and one-to-one service by installation managers, guaranteeing thoughtful service and prime smart light for all customers.

# 03 DESIGN

"Without light, there is no space," said Gunnar Berkelitz.  
Interior lighting design is to reasonably manipulate direct, indirect, and other lighting sources to build a comfortable, healthy, and efficient lighting environment.



# HOME LIGHTING MISUNDERSTANDINGS



Irrational Illuminance gives no space compartmentalization

Non-intelligent

Complex wiring results and inconvenient control

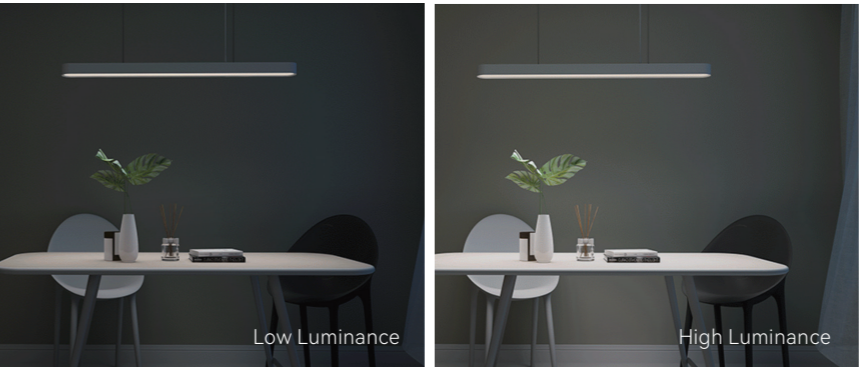
Only appearance and weak quality

# BASIC KNOWLEDGE OF LIGHTING DESIGN

To understand lighting design, we need to first understand light. Being it natural light, artificial light, traditional lighting design, or smart lighting design, the “language” of light has never changed.

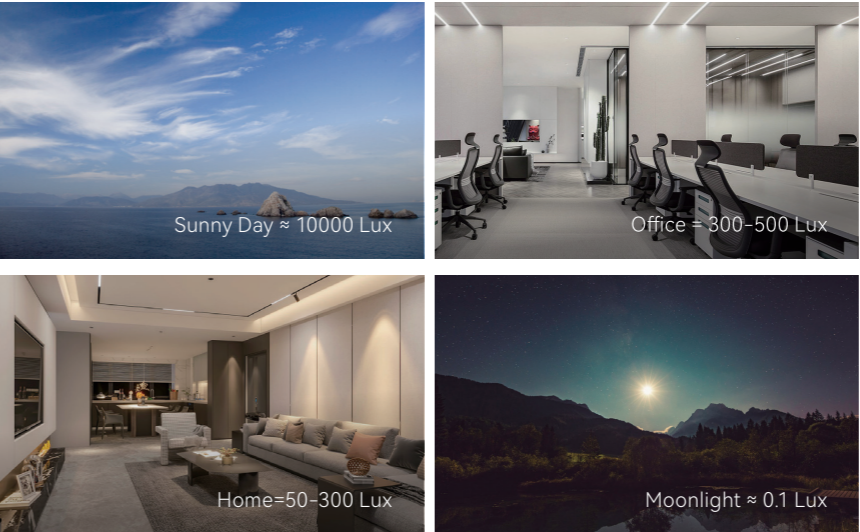
## Luminance

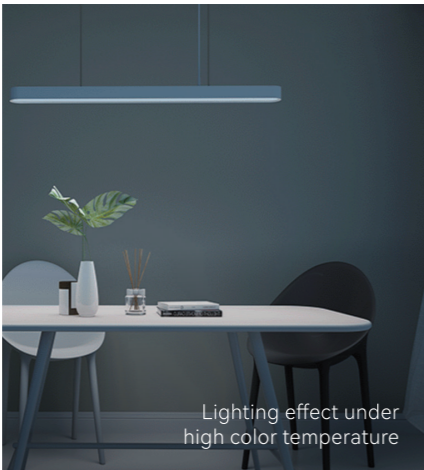
Luminance (in candela per square, i.e. cd/ m2) refers to a physical quantity that characterizes the intensity of the light from an illuminated surface or the light reflected. Simply put, it is the perception of light intensity by the human eyes, therefore a subjective quantity, but also considered the only basic lighting parameter perceived by the eyes. For example, when we hear “this room is too bright”, “this dim room’s got no light!”, it is luminance that is talked about here.



## Illuminance

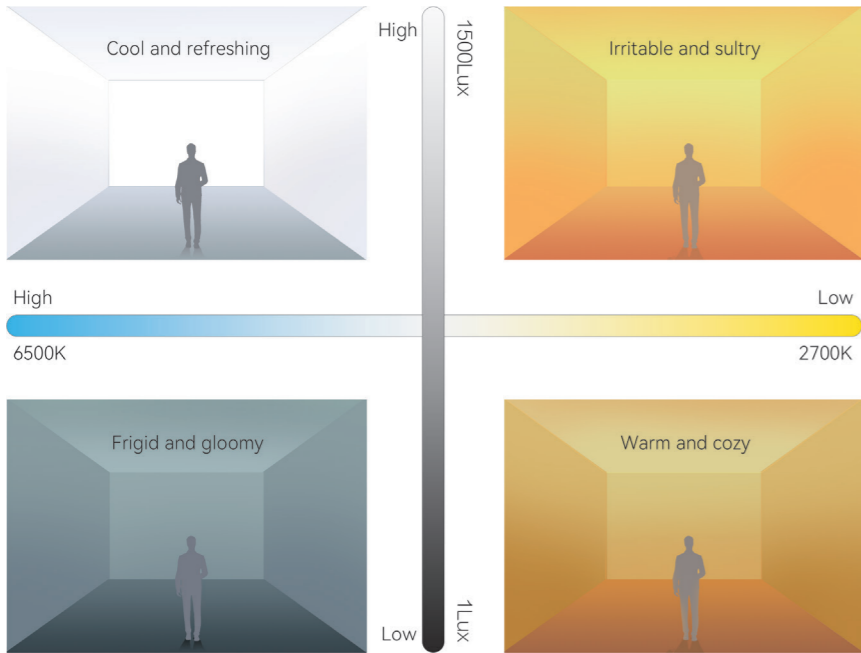
Illuminance (Lux or lx) is the amount of visible light energy received per unit area, as in a physical quantity that indicates the intensity of light and the degree to which an object’s surface is illuminated. When illuminance is referred to in the context of lighting design, it represents the brightness of a space.





### Color Temperature

Color temperature, usually expressed in Kelvin (K), is a unit of measurement that indicates the color component contained in light. Different color temperatures trigger different sensations, unlocking the beauty of nature or home environment. Low color temperature is yellowish, while high color temperature light bluish. Since yellow is a warm tone, low color temperature is often called “warm light”. By the same token, blue is a cold tone, so higher color temperature is called “cold light”.



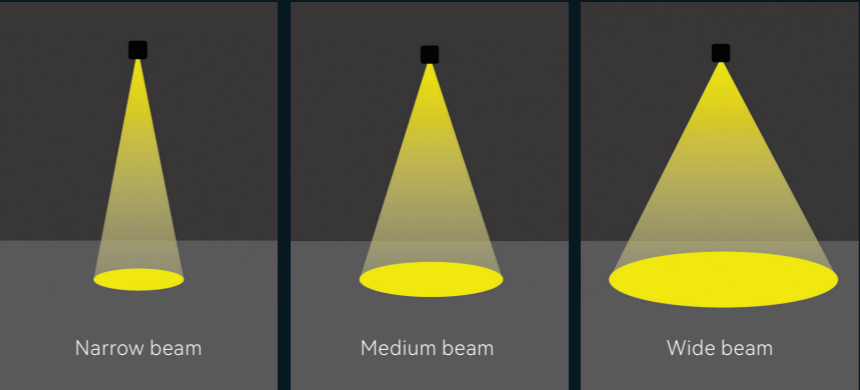
Besides, matching different color temperatures and illuminances can create surprising chemistry, triggering different feelings in people.



### Color Rendering

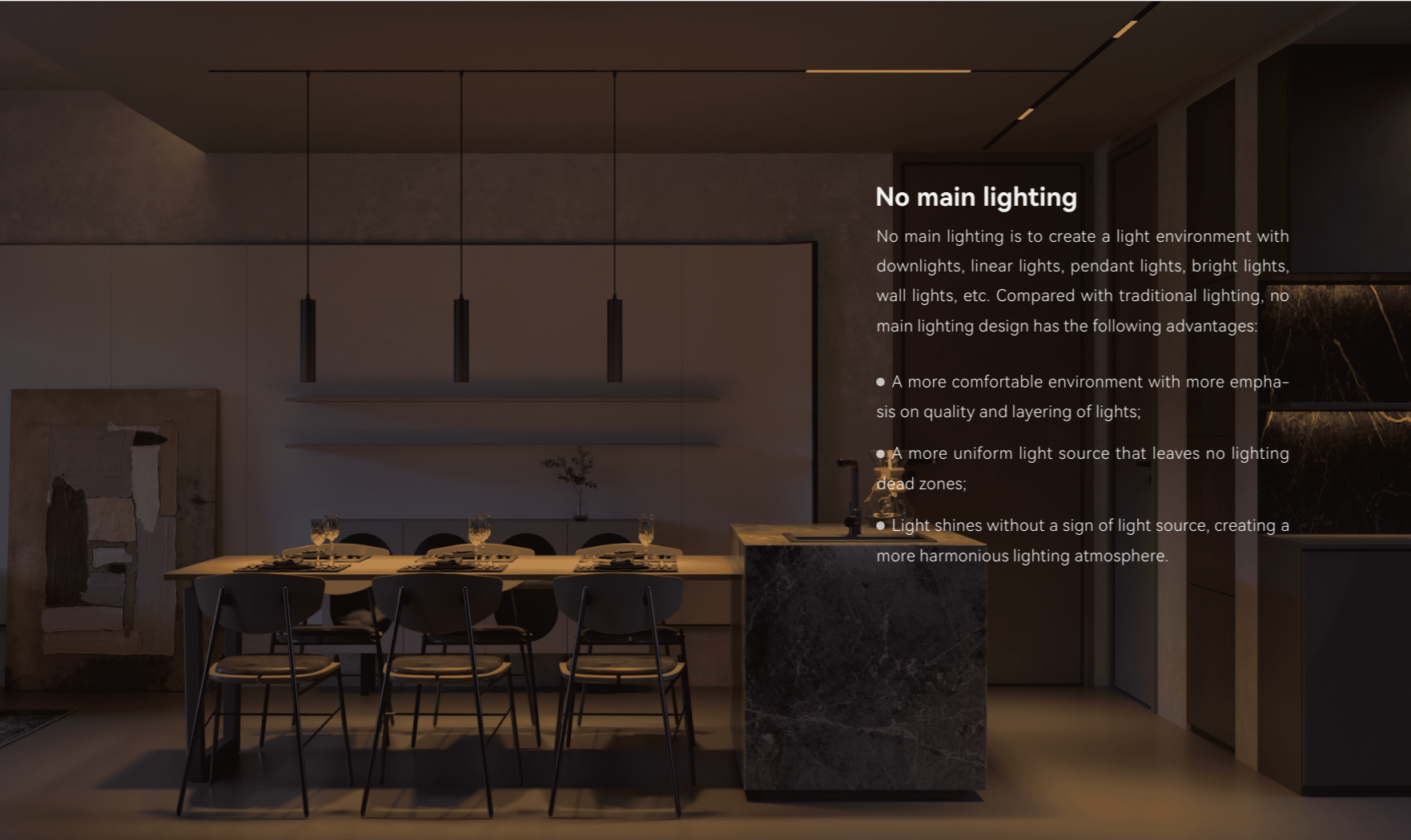
Color rendering (Ra) is a quantitative measure of the ability of a light source to reveal the colors of various objects faithfully, as in the degree to which light reproduces color. The better the color rendering of the light, the more realistic the color rendering. The sun's CRI is 100. The CRI of the light sources commonly seen in life is generally above 80, and that of prime lamps and lanterns can reach 90 or above, close to the color rendering performance of sunlight. Lights with high CRI can add a touch of charm to our home.

Rendering effect of Ra 95 and Ra 80



### Beam Angle

Beam angle is the angle between the two directions of light intensity equal to 50% of the maximum light intensity on one of the planes of the vertical beam centerline. The larger the beam angle, the smaller the central light intensity and the larger the light spot. A narrow beam angle is generally less than 20°; a medium beam angle is 20° – 40°, and a wide beam angle is greater than 40°. Lightings with different beam angles can disperse different lighting effects.



## No main lighting

No main lighting is to create a light environment with downlights, linear lights, pendant lights, bright lights, wall lights, etc. Compared with traditional lighting, no main lighting design has the following advantages:

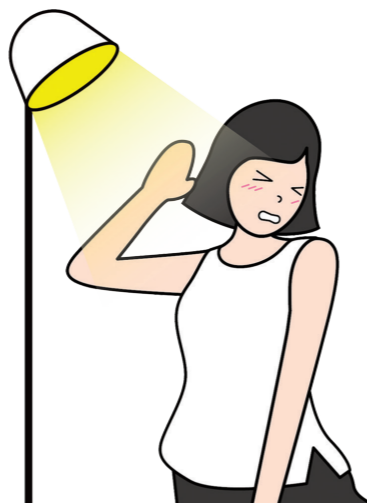
- A more comfortable environment with more emphasis on quality and layering of lights;
- A more uniform light source that leaves no lighting dead zones;
- Light shines without a sign of light source, creating a more harmonious lighting atmosphere.

## Glare

Glare is a phenomenon of eye discomfort or diminished vision caused by extremely bright light sources or by strong brightness contrasts in the visual field. From the way it is generated, there are direct glare and reflect glare in the context of lighting design. Direct glare is produced by a high luminance light source that is directly exposed in the field of view, while reflect glare is contributed by the reflection of a glaring surface in the field of view.

Glare is one of the causes of visual fatigue, which is commonly seen in home lighting design. For example, inappropriate light source installation location and height can expose the human eyes directly under the light source. This is where scientific optical program and professional lighting design come into play. For families with children or the elderly, who are more sensitive to glare, it is particularly important to avoid the possibility of glare.

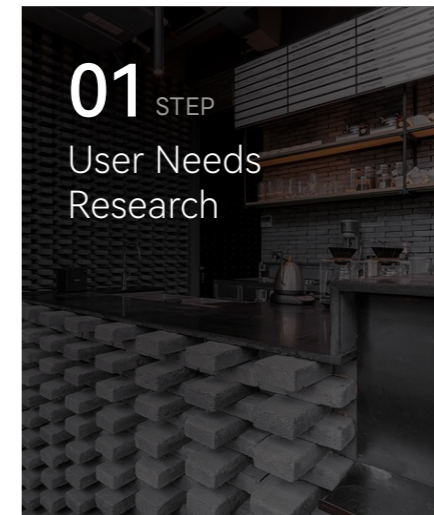
*In-door glare*



## FIVE STEPS TO SMART LIGHTING DESIGN

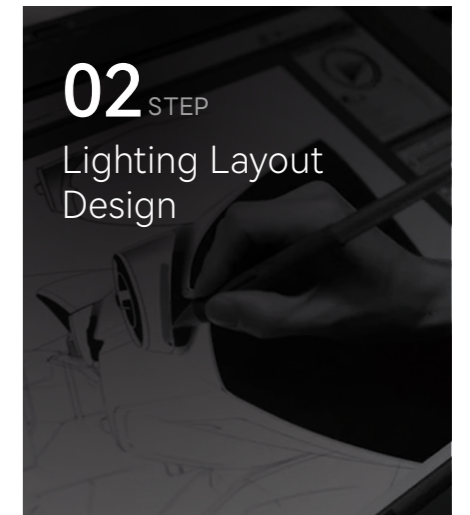
**01** STEP

User Needs Research



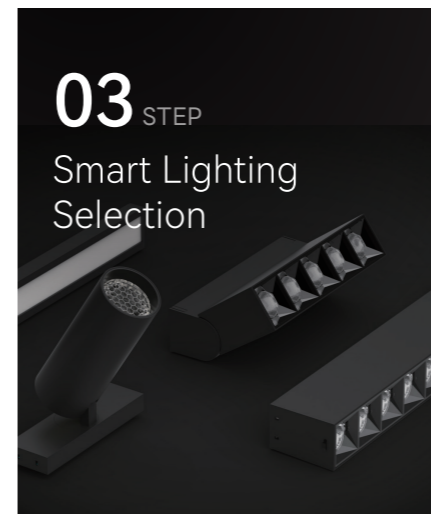
**02** STEP

Lighting Layout Design



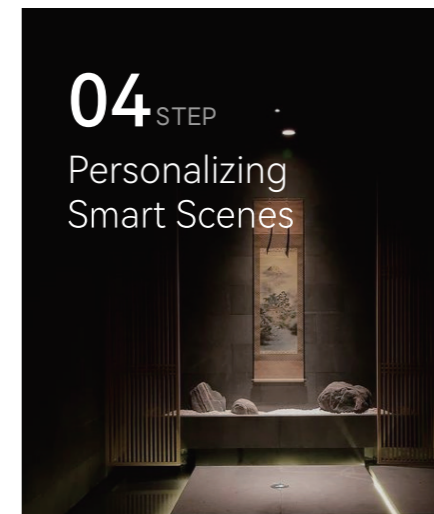
**03** STEP

Smart Lighting Selection



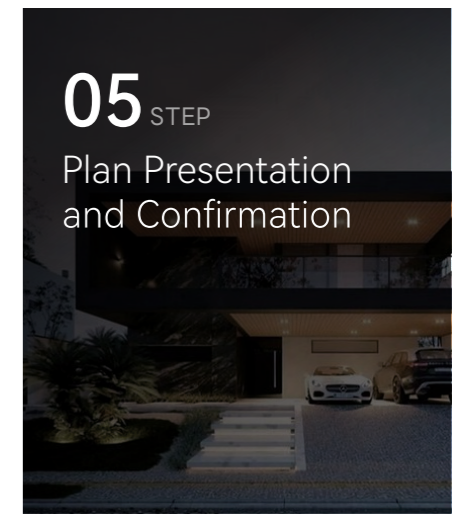
**04** STEP

Personalizing Smart Scenes



**05** STEP

Plan Presentation and Confirmation



# YEELIGHT SMART LIGHTING DESIGN SERVICE

Yeelight has a professional design team of well-experienced lighting designers certified by both Yeelight Lighting Design Academy and Beijing eLicht Culture & Media. We make personalized smart lighting design easier.



## YEELIGHT SMART LIGHTING DESIGN SERVICE

Yeelight lighting design team provides users with professional lighting design and caters all personalized scenes based on users' houses, family members, and living habits. Our lighting design program includes user research, design analysis, CAD-based lighting point layout, Dialux light environment simulation, DiaLux illuminance analysis, smart scene design, and effect drawings.

# 04 SMART TECH

Yeelight Pro Wireless Smart System  
Ushers in the Era of Smart Lighting



# TRADITIONAL WIRED SYSTEM VS YEELIGHT PRO WIRELESS SYSTEM



## Control

- × Weak wire-based control
- ✓ BLE Mesh Wireless Control



## Design

- × Limited design for complex scenarios
- ✓ Unlimited design made easier



## Installation

- × In-wall wiring makes installation and commissioning complex
- ✓ Scan and install. Setup with one button



## Cost

- × \$200/m2 is overreaching for many families
- ✓ \$30-40/m2 on-demand service



## After-sales service

- × Door-to-door service is a hassle
- ✓ Adjust personalized scene simply with one scan



## Power consumption

- × High power consumption, standby power 1W+
- ✓ 0.1W ultra-low power consumption, more eco-friendly



## PRECISE LIGHT CONTROL CREATES PERFECT LIGHTING VIBES



### Multi-Level Control

Multi-level control of single lights, light groups, rooms, zones, and whole houses.



### Personalized Scenes

Adjustable scenes and connection.



### Precise Light Control

0.01% ultra-deep dimming, smooth control of luminance and color temperature just as you want.



### Personalized Adjustment Made Easier

Easy setup and maintenance with virtual device technology.



### Single Gateway Covers All

150 devices allows no control dead zone



## FAST AND STABLE WIRELESS CONTROL EXPERIENCE

### Fast Response Without Any Delay

Enjoy the millisecond smart control experience

### BLE Mesh Networking

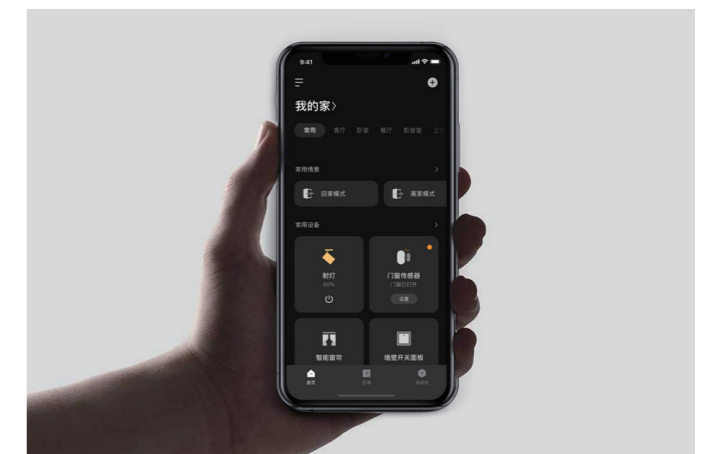
Whole-home auto network-ing with consistent response

### Carrier-grade Stability

Provides a stable control experience as wired systems

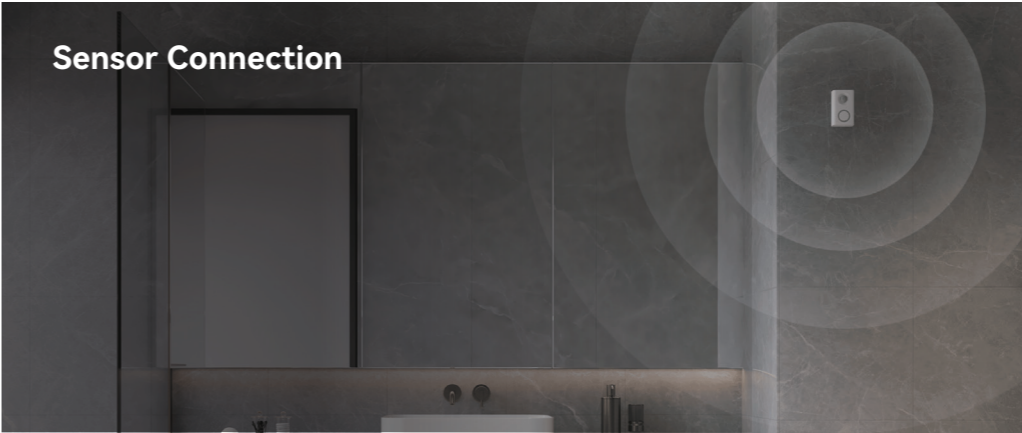
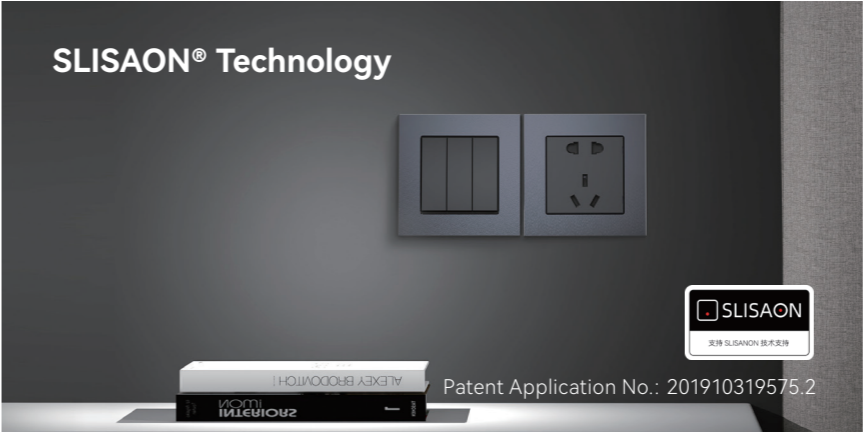
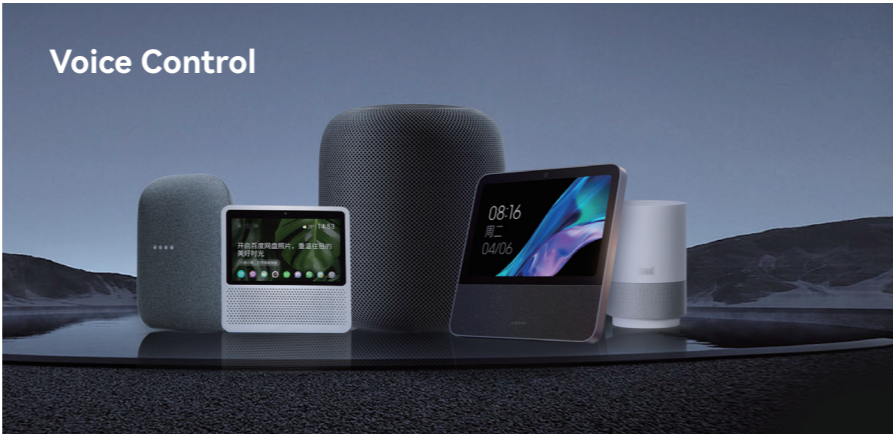
### Prioritized LAN

Fast, safe, stable, and no disrupt from disconnection

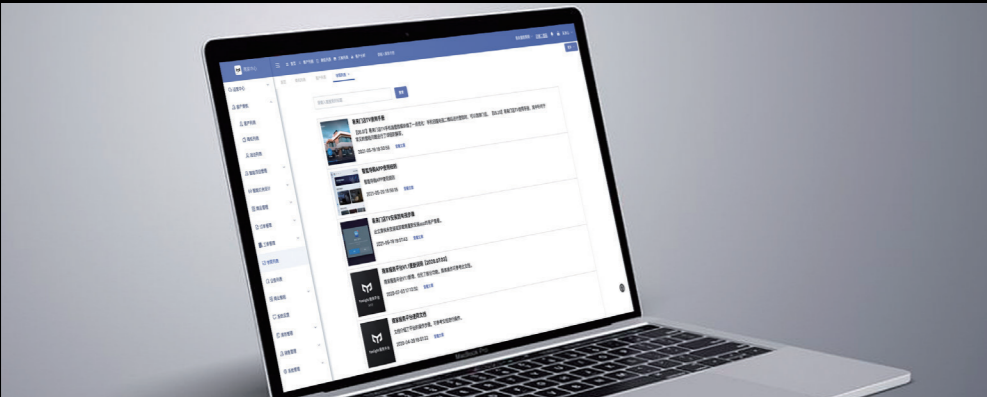


# SMART HOME OFFERS MORE CHOICES WITHOUT THE NEED TO CHANGE USER HABITS

Anytime, Anywhere, Any Control

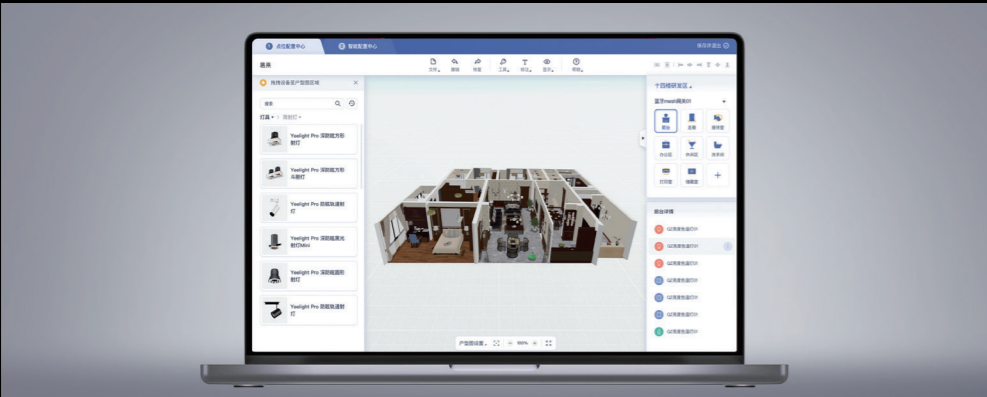


# THE WHOLE PROCESS DIGITAL SYSTEM MAKES INTELLIGENCE MORE SECURE



## Yeelight Merchant Service Platform

The all-process digital management is empowered by order system, design system, ticket system, member management, and academy management.



## Online Design Hub

A powerful lighting design cloud platform that combines online real-time design, scene visualization, construction drawing output, facilitating lighting and scene design for designers.



## Online Design Hub

In-system order dispatching  
Solution at your fingertips  
Scan to install and click to configure



## User APP

Personalized scene setting  
Scan to change the light  
Smart scene control at will

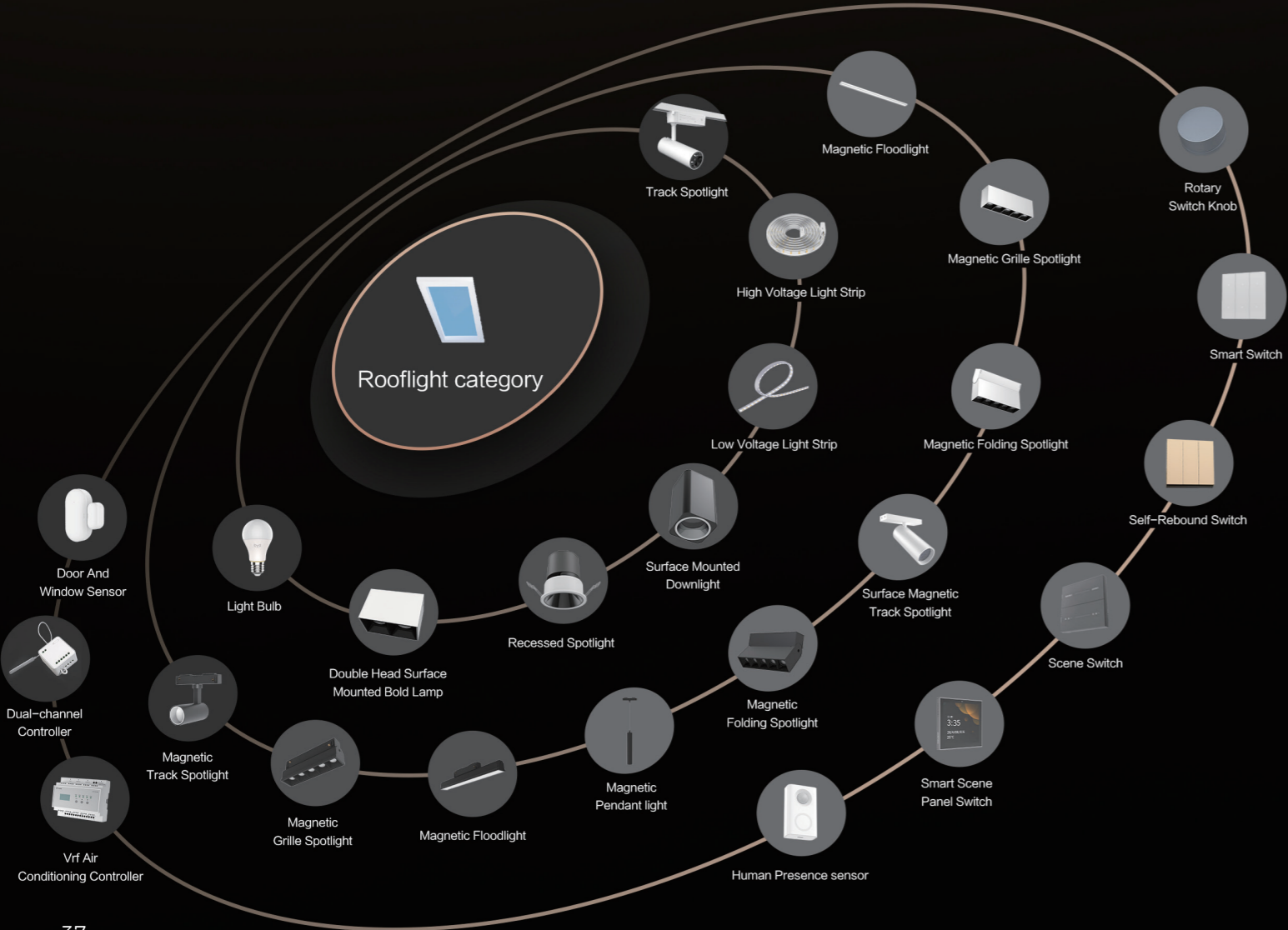
# 05 PRODUCT

Precise Control, Deep Anti-glare, High CRI, and Low Power Consumption.

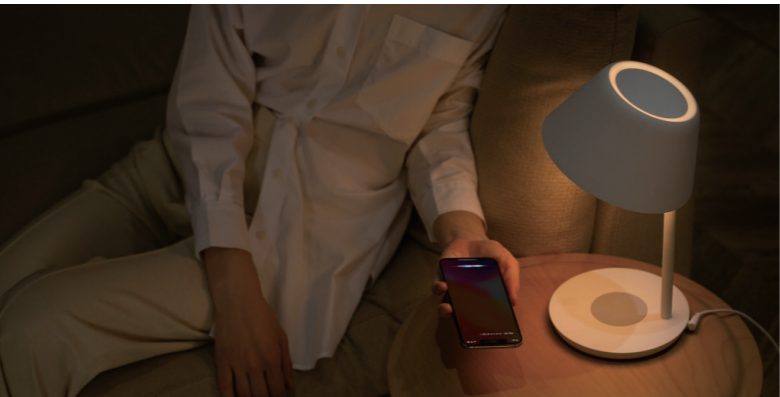


# RICH PRODUCT ECOLOGY

- Rooflight category
- Lighting category
- Magnet category
- Control category



# YEELIGHT PRO SYSTEM STRENGTH



## Smart Control System

Unlimited wireless control, streamlined design process, easy installation and trouble-free maintenance.



## Smart Lights

No extra installation required and low standby power.



## Lighting Design

Plenty of smart scenes, easy implementation of the designer solution.

# PRODUCT SERIES

Yeelight Pro whole house intelligent lighting product lineup is divided into P, S, E, M four product series, covering professional-grade intelligent lighting products, comprehensive intelligent control and interactive products and high-quality lighting profiles and accessories.



## P SERIES Premium

P Series is a premium product line, adopting industry-leading breakthrough technology and new intelligent lighting concept. It covers the Rooflight series, the surface mounted magnetic track series, the human sensor etc, providing users with the ultimate lighting feast.



## E SERIES Elite

E series is the high cost-effective professional intelligent lighting products, with 10,000-point precision light control, deep anti-glare and other professional performance far beyond, providing a cost-effective experience for users.



## S SERIES Superb

S series is the flagship whole house intelligent lighting products, with leading professional performances such as ultra-deep dimming, deep anti-glare, high-index, low power consumption. It covers three categories: intelligent light source, smart interaction and control, meeting the installation needs of high-end users at the villa level.



## M SERIES Middle

D series is a mid-range entry level product line of Yeelight Pro whole-house smart lighting. It covers anti-glare downlights, high-quality ceiling lights and ambient lighting products, providing a highly stable smart lighting experience for young smart lighting enthusiasts.



# YEELIGHT ROOFLIGHT P21

## BLUE SKY, NATURE LIFE

How to lighten your room with sky?  
Yeelight SkyLight is your answer.



Upgraded  
Full-Spectrum  
Light Chipsets



Ultra-Depth  
Dimming



1600k-8000K,  
Ultra-wide Range of  
Color Temperature



Exclusive  
Cutting-edge  
Technology



Compatible with  
Yeelight Pro



Remote Control  
Supported



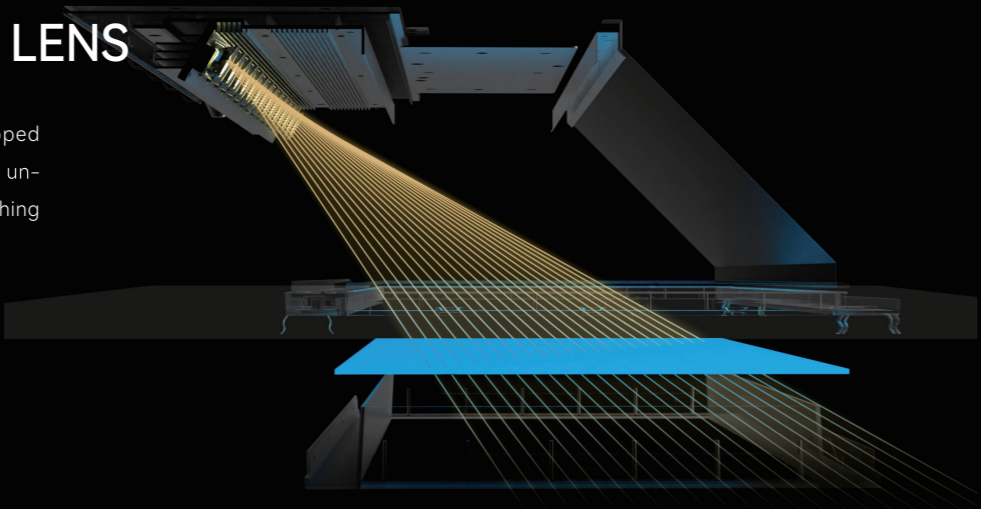


## NANO-SCALE TECHNOLOGY SIMULATING RAYLEIGH SCATTERING EFFECT

Yeelight rooflight adopts nano-scale technology to faithfully simulate the atmospheric Rayleigh scattering effect, replicating the effect of countless tiny particles being illuminated by sunlight, presenting a vivid blue color that closely resembles the sky.

## INNOVATIVE OPTICAL LENS

Yeelight cutting-edge technology and self-developed optical lens design solve industry challenges such as un-even illumination and dark spots, giving you a refreshing feeling of a clear sky.



## COLOR TEMPERATURE 1600K-8000K

Customized 1600K~8000K ultra-wide color temperature, Compatible with YeelightPro, Capable of simulating the beautiful color changes of sunlight from the dawn of sunrise to the sunset glow of dusk

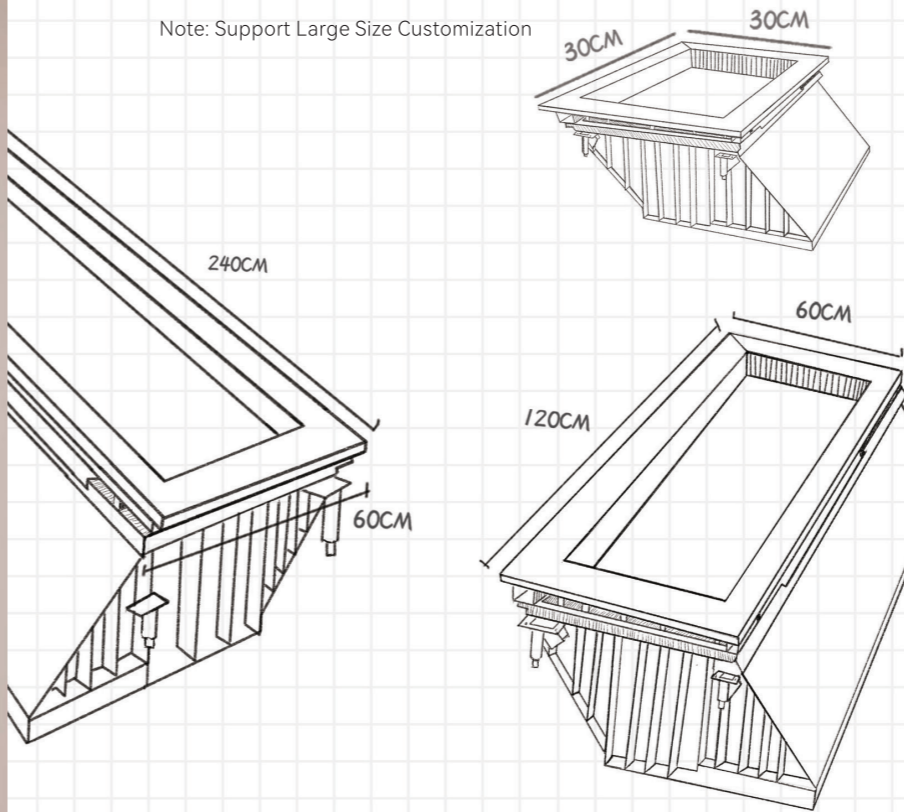




## ROOFLIGHT FAMILY

More Sizes for Different Scenarios

Note: Support Large Size Customization



## P21 PRODUCT PARAMETERS

Rated Input

**220V~50/60Hz 0.41A**

Rated Power

**80w**

Power Factor

**0.95**

Luminous Flux

**2400lm@8000K**

Color Temperature

**1600K~8000K**

Rendering Index

**Ra94@8000K**

Beam Angle

**27°**

Net Weight

**4.33KG**

Product Size(mm)

**598\*434\*190**

### Cut-out Size

Inner Size (mm)

**651\*345**

Outer Size (mm)

**636\*327**

RoofLight II is installed in the aluminum ceiling by default without opening the hole. Installation in the Plaster Ceiling(Optional Accessories Package Required)

# YEELIGHT ROOFLIGHT NIGHTINGALE PRO

## Product Parameters

Rated Input	Power Factor
<b>220V~50/60Hz 0.41A</b>	<b>0.95</b>
Rated Power	Color Temperature
<b>80w</b>	<b>1600K~8000K</b>
Luminous Flux	Beam Angle
<b>2400lm@8000K</b>	<b>27°</b>
Rendering Index	Product Size(mm)
<b>Ra94@8000K</b>	<b>598*434*190</b>
Net Weight	
<b>4.33KG</b>	
Cut-out Size	
Inner Size (mm)	Outer Size (mm)
<b>651*345</b>	<b>636*327</b>

## Acessory Packages

				
×4	×4	×4	×2	×1
Hanging Braket	Hanging Assembly	Hanging Cord With Ring	Safety Cord	Magnetic Ornamental Frame

## Installation

Support installation on integrated ceiling and non-integrated ceiling



Integrated Ceiling

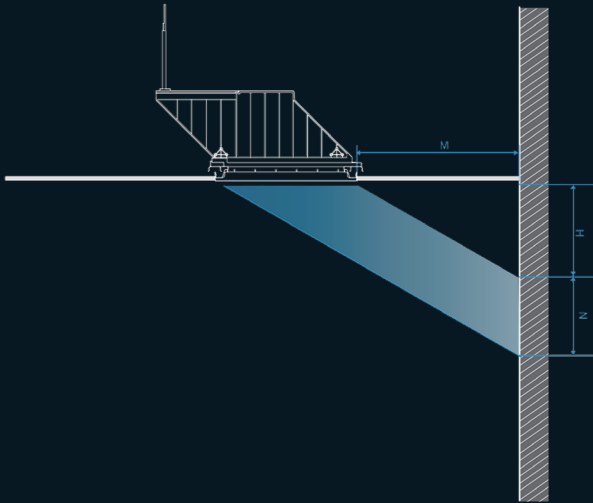


For Plasterboard Ceilings

Accessory packages need to be purchased seperately

## Installation Position And Light Outlet Direction

It is recommended to face the light outlet towards wall to avoid strong light;



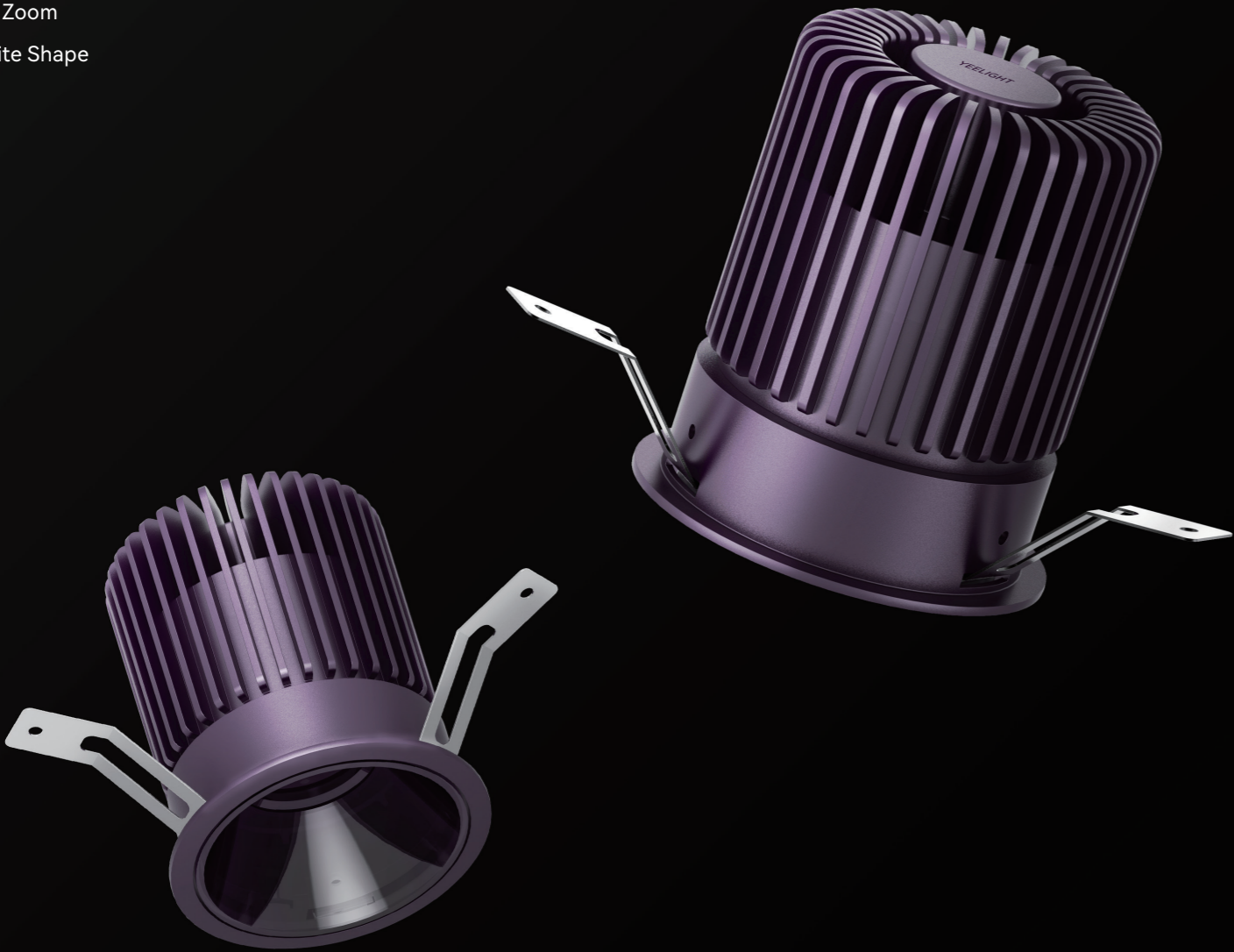
- M** Distance from lamp to wall (less than 1.7m is recommended)
- H** Distance from upper edge of lighting to ceiling

\*Relation between the two parameters:  $M=1.7H$

LIGHT SOURCE

# X SERIES DIGITAL ZOOM SPOTLIGHT

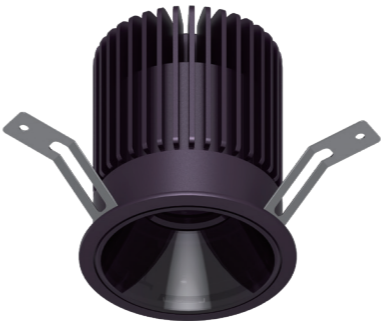
- | Customized Beam Angle
- | Digital Zoom
- | Exquisite Shape



LIGHTING PRODUCTS X SERIES

## X Series Digital Zoom Spotlight 3" -Round

Product Model YP-0069

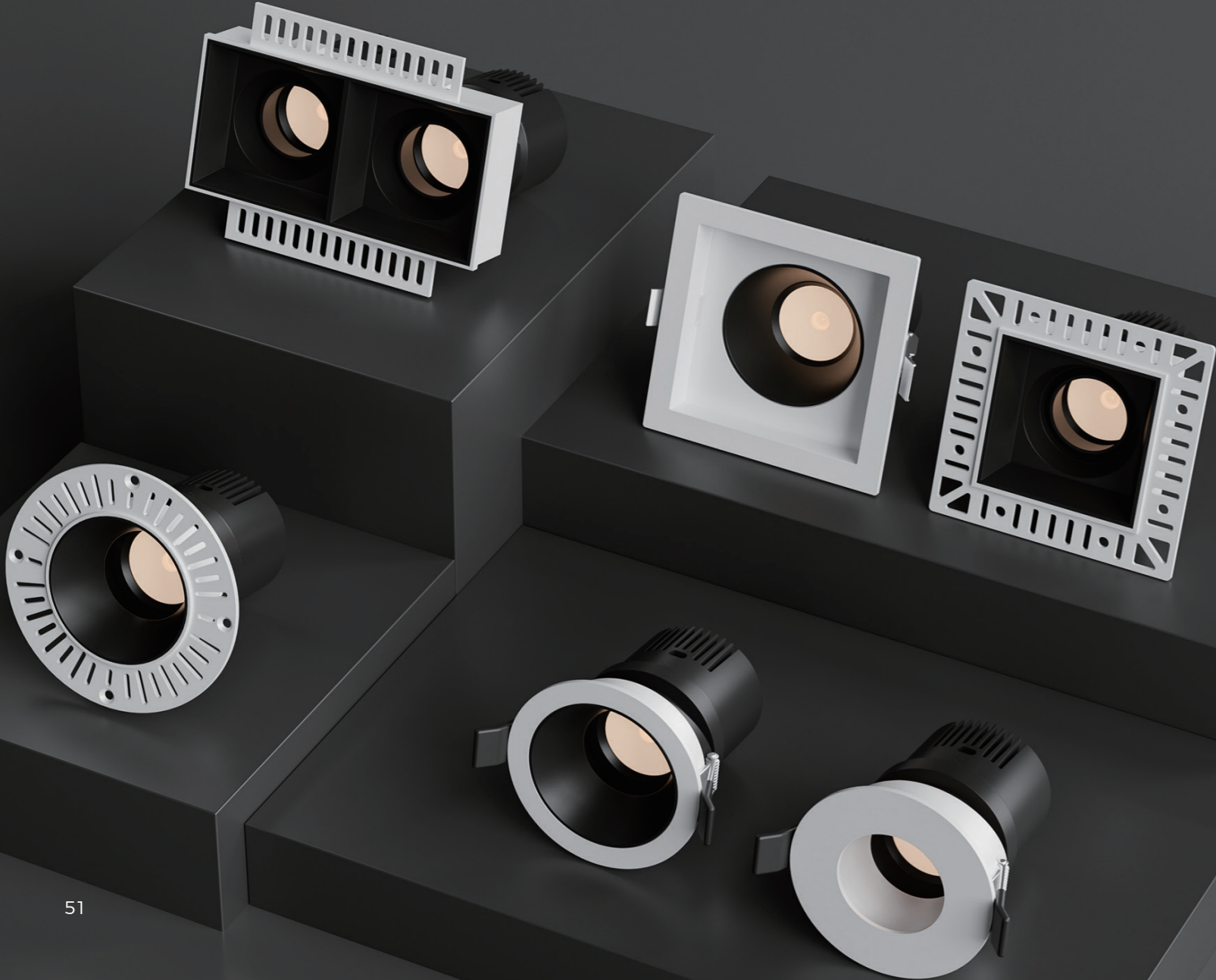


Product size	Beam angle	Beam angle
82.5*82.5*95mm	15° ~55°	15° ~55°
Product size	Beam angle	Beam angle
82.5*82.5*95mm	15° ~55°	15° ~55°

LIGHT SOURCE

# U SERIES SPOTLIGHT MODULE

- | Removable surface fixture   free combination
- | 0.01% dimming
- | Ultra-compact power supply
- | More power   high luminous flux
- | Deep anti-glare   UGR< 10

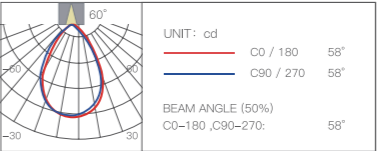
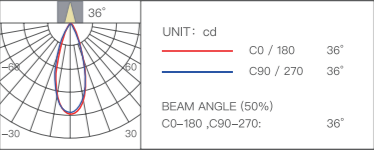
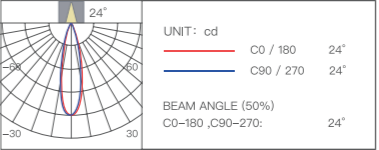


LIGHT SOURCE   U SERIES

# U series spotlight module 2"



Dimming depth	Color temperature	Power
0.01%–100%	2700–5700K	12W
CRI		
Ra90		
Luminous flux		
	Beam angle	Luminous flux
YP–0240	24°	800lm
YP–0241	36°	800lm
YP–0242	58	800lm



# U SERIES FIXTURE SPOTLIGHT

Removable surface fixture, free combination



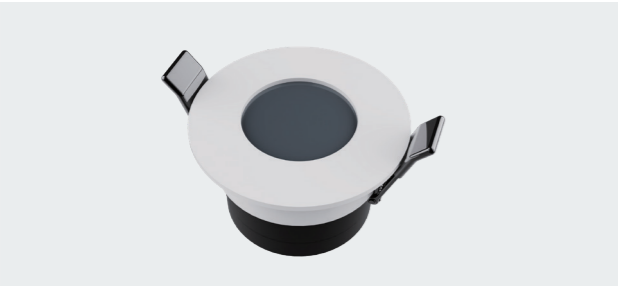
Recessed round spotlight accessory White

Product Model : YP-0243      Opening size: Φ75mm  
Product size: Φ85\*45mm



Recessed round spotlight accessory Black

Product Model : YP-0243      Opening size: Φ75mm  
Product size: Φ85\*45mm



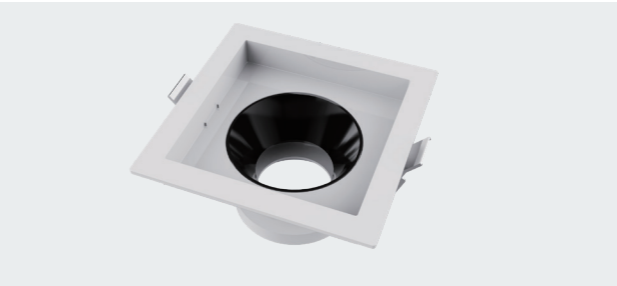
Recessed round spotlight accessory White  
Waterproof

Product Model : YP-0243      Opening size: Φ75mm  
Product size: Φ85\*45mm



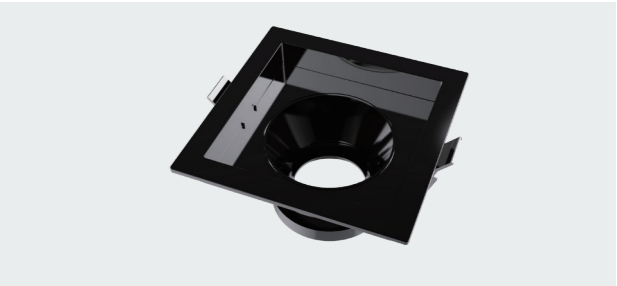
Recessed round spotlight accessory Black  
Waterproof

Product Model : YP-0243      Opening size: Φ75mm  
Product size: Φ85\*45mm



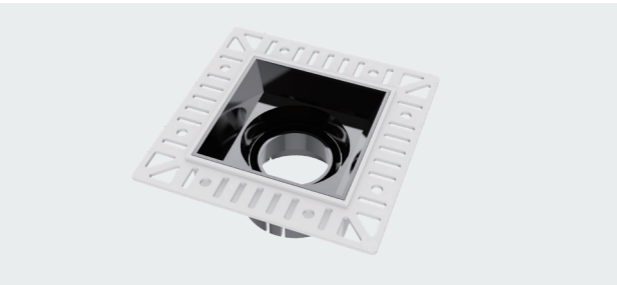
Recessed square spotlight accessory White

Product Model : YP-0244      Opening size: 100\*100mm  
Product size: 112\*112\*100mm



Recessed square spotlight accessory Black

Product Model : YP-0244      Opening size: 100\*100mm  
Product size: 112\*112\*100mm



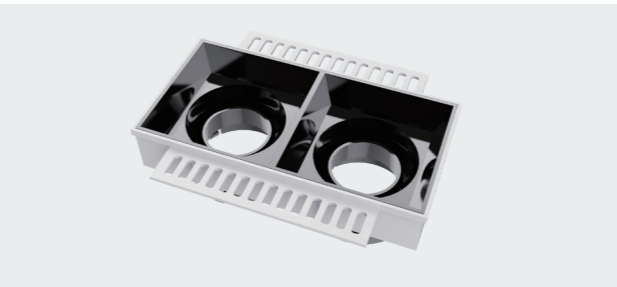
Pre-embedded square spotlight accessory White

Product Model : YP-0244      Opening size: 75mm\*75mm  
Product size: 110\*110\*53mm



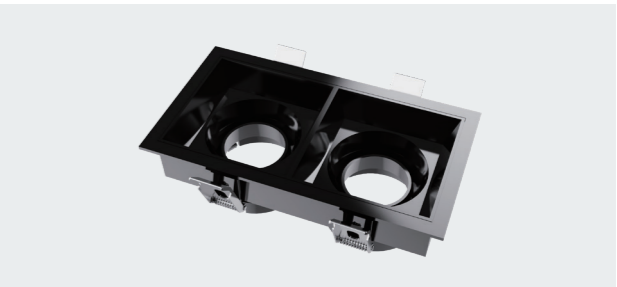
Pre-embedded round spotlight accessory White

Product Model : YP-0243      Opening size: Φ75mm  
Product size: Φ110\*45mm



Pre-embedded square spotlight accessory-two-head White

Product Model : YP-0245      Opening size: 145\*75mm  
Product size: 155\*85\*53mm



Pre-embedded square spotlight accessory-two-head Black

Product Model : YP-0245      Opening size: 145\*75mm  
Product size: 155\*85\*53mm

LIGHT SOURCE

# P20 SURFACE MOUNTED MAGNETIC TRACK LIGHTS

- | 0.01% Precision of Dimming
- | Flexible Control of Each Light
- | 5mm Ultra-Thin Track Design
- | Multiple Options of Luminaires
- | Easy Surface Mounted Installation



SURFACE MOUNTED MAGNETIC P SERIES

## P20 Surface Mounted Magnetic Floodlight 30cm

Product Model YLP104



Product size	Power	Color temperature
305*31*12mm	6W	2700–6000K
Luminaire flux	CRI	Beam angle
280lm	Ra ≥ 90	90°

SURFACE MOUNTED MAGNETIC P SERIES

## P20 Surface Mounted Magnetic Floodlight 60cm

Product Model YLP105



Product size	Power	Color temperature
605*31*12mm	12W	2700–6000K
Luminaire flux	CRI	Beam angle
560lm	Ra ≥ 90	90°

SURFACE MOUNTED MAGNETIC P SERIES

## P20 Surface Mounted Magnetic Grille Light 5 heads

Product Model YLP104



Product size	Power	Color temperature
137*33*48mm	6W	2700–6000K
Luminaire flux	CRI	Beam angle
560lm	Ra ≥ 90	38°

# P20 Surface Mounted Magnetic Grille Light

10 heads



Dimming depth	Power	Color temperature
0.08%–100%	12W	2700–6000K
Luminaire flux	CRI	Beam angle
700lm	Ra ≥ 90	38°

# P20 Surface Mounted Magnetic Track spotlight



Dimming depth	Power	Color temperature
0.08%–100%	7W	2700–6000K
Luminaire flux	CRI	Beam angle
450lm	Ra ≥ 90	15° /24°

# P20 Surface Mounted Magnetic Folding Spotlight

5 heads



Dimming depth	Power	Color temperature
0.08%–100%	13.5W	2700–6000K
Luminaire flux	CRI	Beam angle
600lm	Ra ≥ 90	60°

# P20 Surface Mounted Magnetic Driver

120W



Product size	Power	Output voltage
215.8×31.4×53mm	120W	DC 45V

LIGHT SOURCE

S SERIES RECESSED SPOTLIGHT

- | Modular Structure Design with Changeable shapes

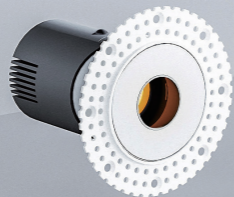
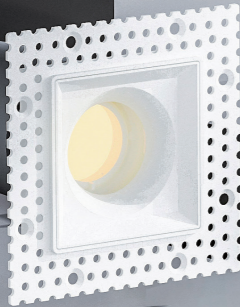
| Soft and Clean Mixing Color Light Technology

| Fermat Curve Microstructure (with Black Light Technology)

| UDDT 0.01% Dimming
- | Full Color Gamut Ra98 High Color Rendering

| The First Dual Color Temperature Lens

| 15W with Strong Performance



LIGHT SOURCE S SERIES

Recessed spotlight75mm -Round single head

Product size Φ82×101mm



Round Trimless Bezel



Round Bezel

Reflector



Bright Gold



Bright Silver



Gun Black



Matte White



Matte Black

Other Accessories



Waterproof Glasses



Cellular Mesh



Stretch Film



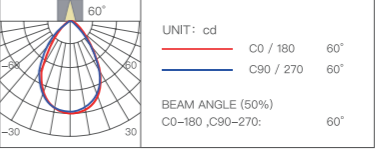
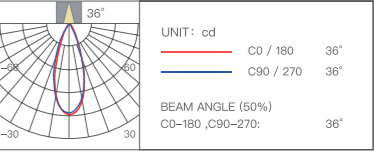
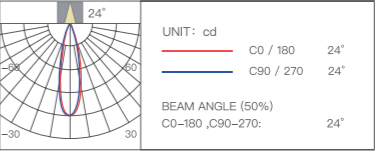
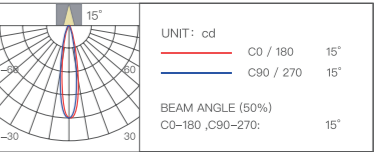
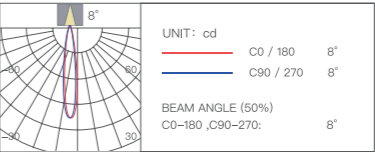
Soft Light Sheet

Opening size	Dimming depth	Beam angle
Φ75mm	0.01%–100%	8° /15° /24° /36° /60°

Color temperature	Power	CRI
2700–6500K	15W	Ra ≥ 98

Luminous flux

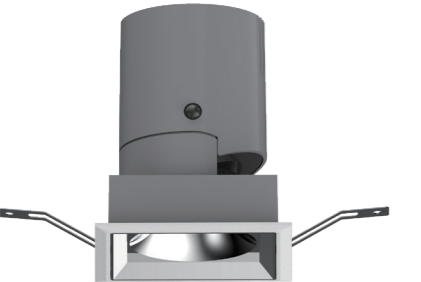
	Beam angle	Luminous flux
YP–0350	8°	170 lm
YP–0351	15°	450 lm
YP–0352	24°	680 lm
YP–0353	36°	680 lm
YP–0354	60°	680 lm



Recessed spotlight

75mm -Square Single Head

Product size   82x82x101mm



Square Trimless Frame



Square Frame

Reflector



Bright Gold



Bright Silver



Gun Black



Matte White



Matte Black

Other Accessories



Waterproof Glasses



Cellular Mesh



Stretch Film



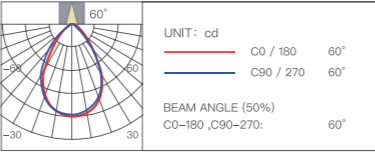
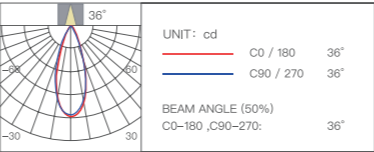
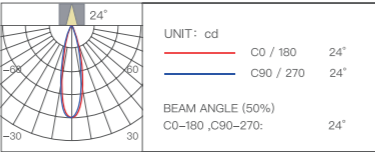
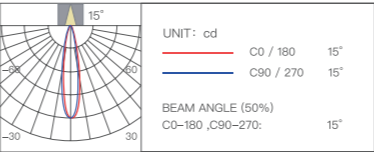
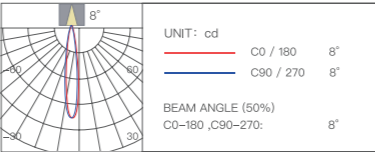
Soft Light Sheet

Opening size	Dimming depth	Beam angle
75x75mm	0.01%–100%	8° /15° /24° /36° /60°

Color temperature	Power	CRI
2700–6500K	15W	Ra ≥ 98

Luminous flux

	Beam angle	Luminous flux
YP–0350	8°	170 lm
YP–0351	15°	450 lm
YP–0352	24°	680 lm
YP–0353	36°	680 lm
YP–0354	60°	680 lm



Recessed spotlight

75mm -Square double head

Product size   150x82x101mm



Double-headed square



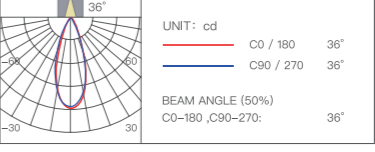
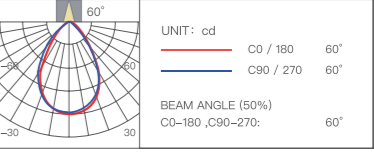
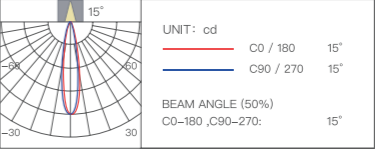
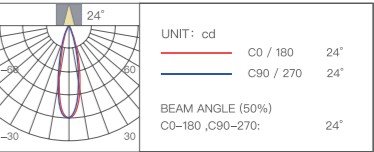
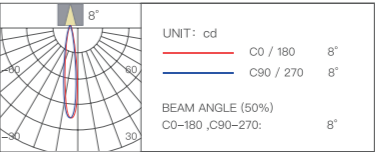
Double-headed Square Trimless Frame

Opening size	Dimming depth	Beam angle
145x75mm	0.01%–100%	8° /15° /24° /36° /60°

Color temperature	Power	CRI
2700–6500K	15W×2	Ra ≥ 98

Luminous flux

	Beam angle	Luminous flux
YP–0350	8°	170 lm ×2
YP–0351	15°	450 lm ×2
YP–0352	24°	680 lm ×2
YP–0353	36°	680 lm ×2
YP–0354	60°	680 lm ×2



Reflector



Bright Gold



Bright Silver



Gun Black



Matte White



Matte Black

Other Accessories



Waterproof Glasses



Cellular Mesh



Stretch Film



Soft Light Sheet

# Recessed spotlight

75mm -Round single head

Product size Φ82x85.5mm



Round Trimless Bezel



Round Bezel

## Reflector



Bright Gold



Bright Silver



Gun Black



Matte White



Matte Black

## Other Accessories



Waterproof Glasses



Cellular Mesh



Stretch Film



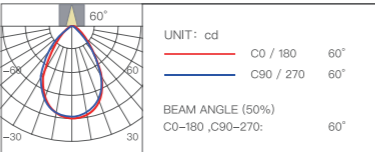
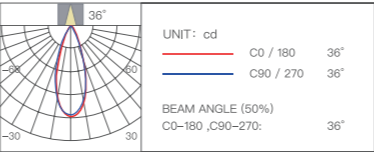
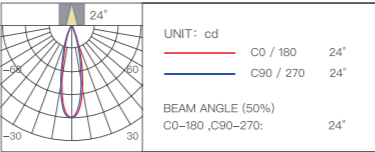
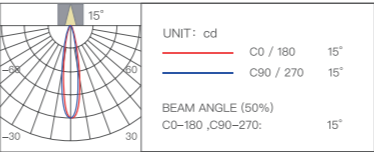
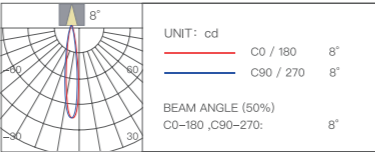
Soft Light Sheet

Opening size	Dimming depth	Beam angle
Φ75mm	0.01%–100%	8° /15° /24° /36° /60°

Color temperature	Power	CRI
2700–6500K	12W	Ra ≥ 98

## Luminous flux

	Beam angle	Luminous flux
YP-0355	8°	140 lm
YP-0356	15°	380 lm
YP-0357	24°	550 lm
YP-0358	36°	550 lm
YP-0359	60°	550 lm



# Recessed spotlight

75mm -Square Single Head

Product size 82x82x85.5mm



Square Trimless Frame



Square Frame

Opening size	Dimming depth	Beam angle
75x75mm	0.01%–100%	8° /15° /24° /36° /60°

Color temperature	Power	CRI
2700–6500K	12W	Ra ≥ 98

## Luminous flux

	Beam angle	Luminous flux
YP-0355	8°	140 lm
YP-0356	15°	380 lm
YP-0357	24°	550 lm
YP-0358	36°	550 lm
YP-0359	60°	550 lm

## Reflector



Bright Gold



Bright Silver



Gun Black



Matte White



Matte Black

## Other Accessories



Waterproof Glasses



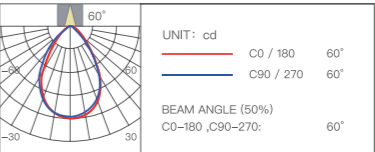
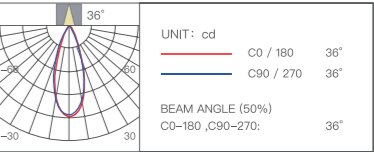
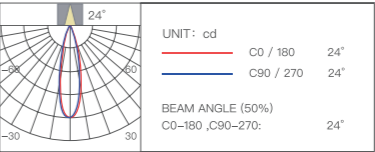
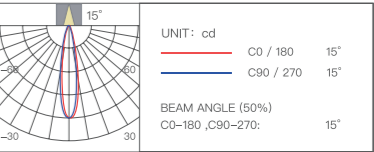
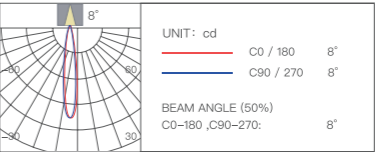
Cellular Mesh



Stretch Film



Soft Light Sheet



# Recessed spotlight

75mm -Square double head

Product size 150x82x85.5mm



Double-headed square



Double-headed Square Trimless Frame

## Reflector



Bright Gold



Bright Silver



Gun Black



Matte White



Matte Black

## Other Accessories



Waterproof Glasses



Cellular Mesh



Stretch Film



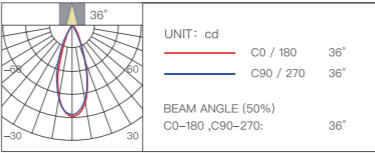
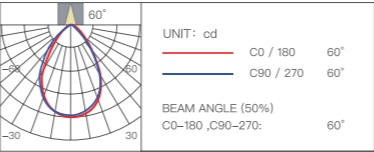
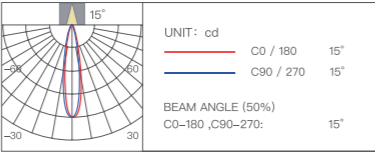
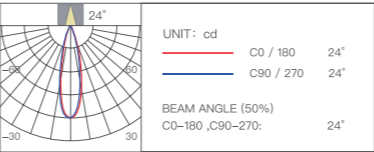
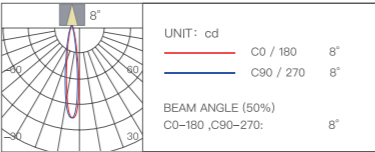
Soft Light Sheet

Opening size	Dimming depth	Beam angle
144x75mm	0.01%–100%	8° /15° /24° /36° /60°

Color temperature	Power	CRI
2700–6500K	12W×2	Ra ≥ 98

## Luminous flux

	Beam angle	Luminous flux
YP–0355	8°	140 lm ×2
YP–0356	15°	380 lm ×2
YP–0357	24°	550 lm ×2
YP–0358	36°	550 lm ×2
YP–0359	60°	550 lm ×2



# Recessed spotlight

55mm -Round single head

Product size Φ62x80.5mm



Round Trimless Bezel



Round Bezel

## Reflector



Bright Gold



Bright Silver



Gun Black



Matte White



Matte Black

## Other Accessories



Waterproof Glasses



Cellular Mesh



Stretch Film



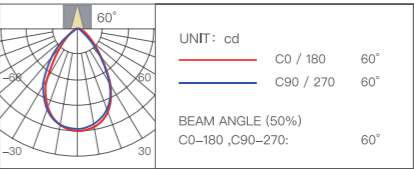
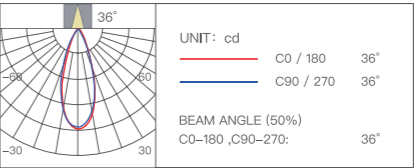
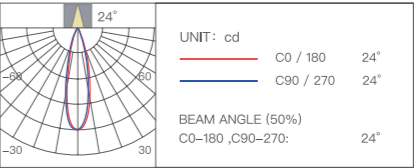
Soft Light Sheet

Opening size	Dimming depth	Beam angle
Φ55mm	0.01%–100%	24° / 36° / 60°

Color temperature	Power	CRI
2700–5700K	8W	Ra ≥ 95

## Luminous flux

	Beam angle	Luminous flux
YP–0384	24°	330 lm
YP–0385	36°	250 lm
YP–0386	60°	330 lm



Recessed spotlight

55mm -Square Single Head

Product size 62x62x80.5mm



Square Trimless Frame



Square Frame

Reflector



Bright Gold



Bright Silver



Gun Black



Matte White



Matte Black

Other Accessories



Waterproof Glasses



Cellular Mesh



Stretch Film

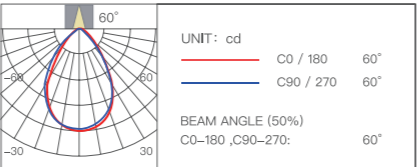
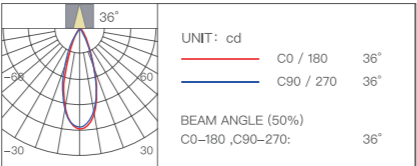
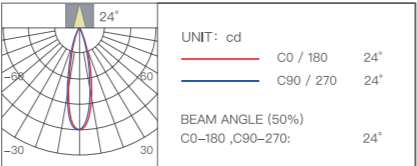


Soft Light Sheet

Opening size	Dimming depth	Beam angle
55x55mm	0.01%–100%	24° / 36° / 60°
Color temperature	Power	CRI
2700–5700K	8W	Ra ≥ 95

Luminous flux

	Beam angle	Luminous flux
YP-0384	24°	330 lm
YP-0385	36°	250 lm
YP-0386	60°	330 lm



Recessed spotlight

55mm -Square double head

Product size 112x62x80.5mm



Double-headed square

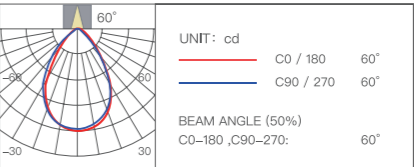
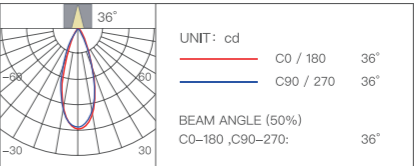
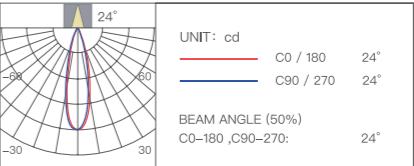


Double-headed Square Trimless Frame

Opening size	Dimming depth	Beam angle
103x55mm	0.01%–100%	24° / 36° / 60°
Color temperature	Power	CRI
2700–5700K	8W×2	Ra ≥ 95

Luminous flux

	Beam angle	Luminous flux
YP-0384	24°	330 lm ×2
YP-0385	36°	250 lm ×2
YP-0386	60°	330 lm ×2



Reflector



Bright Gold



Bright Silver



Gun Black



Matte White



Matte Black

Other Accessories



Waterproof Glasses



Cellular Mesh



Stretch Film



Soft Light Sheet

Recessed spotlight

35mm -Round single head

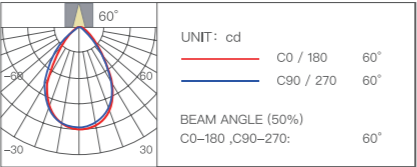
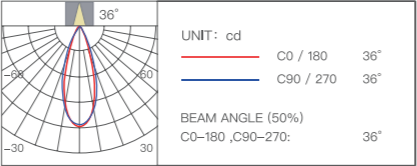
Product size Φ40x58mm



Opening size	Dimming depth	Beam angle
Φ35mm	0.01%–100%	36° / 60°

Color temperature	Power	CRI
2700–5700K	5W	Ra ≥ 95

Luminous flux		
	Beam angle	Luminous flux
YP-0385	36°	170 lm
YP-0386	60°	120 lm



LIGHT SOURCE

# S21 DOUBLE SURFACE-MOUNTED DOWNLIGHTS

- | 0.01% Precision of Dimming

| Standby power consumption < 0.1W

| Built-in power supply

| Quick Heat Dissipation
- | 1000lm Ultra High Lumen

| Dimmable and Tunable Chipset

| Surface-mounted Installation without Limitation



LIGHT SOURCE S SERIES

# Double-headed Grid Light

Black | White

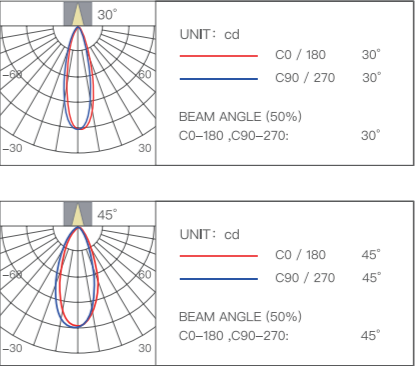
Product Model YLP036



Product size	Dimming depth	Beam angle
146*76*95mm	0.01%–100%	30° / 45°

Color temperature	Power	CRI
2800–6000K	16W	Ra ≥ 90

Luminous flux		
	Beam angle	Luminous flux
	30°	1000 lm
	45°	1000 lm



LIGHT SOURCE

# S21 RECESSED MAGNETIC LIGHTING

Upgraded version

- | High Wattage, High Efficiency, Suitable for Residential Villas and Commercial Proejcts
- | Ultra-deep dimming
- | BLE MESH
- | 48V Low voltage supply
- | 0.01% Precision of Dimming



RECESSED MAGNETIC S SERIES

## Magnetic floodlight 30cm

Product Model YP-0126

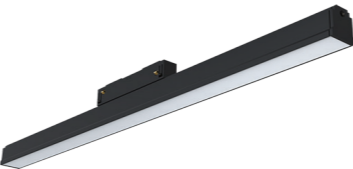


Product size	Power	Color temperature
306.5×32×58mm	10W	2700–6500K
Dimming depth	Luminaire flux	CRI
0.08%–100%	480lm	Ra ≥ 90

RECESSED MAGNETIC S SERIES

## Magnetic floodlight 60cm

Product Model YP-0127



Product size	Power	Color temperature
606.5×32×58mm	20W	2700–6500K
Dimming depth	Luminaire flux	CRI
0.08%–100%	1000lm	Ra ≥ 90

RECESSED MAGNETIC S SERIES

## Magnetic Grille Light 5 heads

Product Model YP-0129



Product size	Power	Color temperature
140×32×58mm	10W	2700–6000K
Dimming depth	Luminaire flux	CRI
0.08%–100%	600lm	Ra ≥ 90

RECESSED MAGNETIC S SERIES

# Magnetic Grille Light

10 heads

Product Model YP-0128



Product size	Power	Color temperature
272×32×58mm	20W	2700–6000K
Dimming depth	Luminaire flux	CRI
0.08%–100%	1150lm	Ra ≥ 90

RECESSED MAGNETIC S SERIES

# Magnetic Folding Spotlight

5 heads

Product Model YP-0132



Product size	Power	Color temperature
137.5×34.5×160mm	15W	2700–6000K
Dimming depth	Luminaire flux	CRI
0.08%–100%	750lm	Ra ≥ 90

RECESSED MAGNETIC S SERIES

# Magnetic track spotlight

Product Model YP-0130



Dimming depth	Power	Color temperature
0.08%–100%	20W	2700–6000K
Luminaire flux	CRI	Beam angle
1100lm	Ra ≥ 90	/

RECESSED MAGNETIC S SERIES

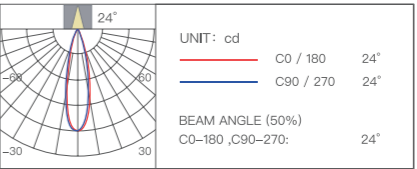
# Magnetic Pendant Light

Product Model YP-0131

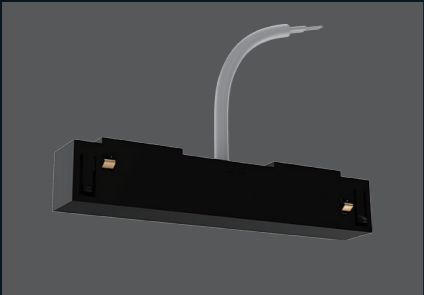
Product size 302×41mm



Dimming depth	Power	Color temperature
0.08%–100%	15W	2700–6000K
Luminaire flux	CRI	Beam angle
850lm	Ra ≥ 90	24°



# S21 TRACK ACCESSORIES



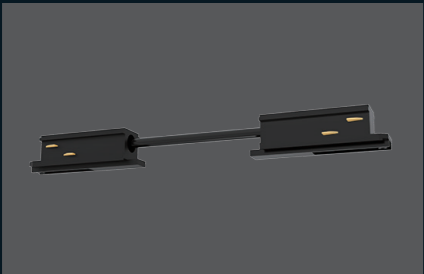
## Magnetic power input connector

External power supply DC access  
Product Model YLP067



## Magnetic track fixing plate

Fixed track splicing  
Product Model YLP068



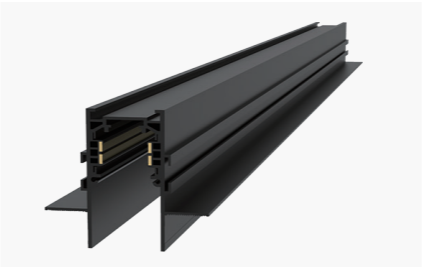
## Magnetic track double-headed connectors

Circuit conductivity for non-linear or rear mount use  
Product Model YLP072



## Magnetic Linear Connector

Circuit conductivity for front-mounted connections  
Product Model YLP063



## Magnetic Tracking

Recessed Internal Mounted Version

1M/2M Version, Mounting holes  
Product Model YLP078



## Magnetic L shaped vertical connector

Recessed Internal Mounted Version

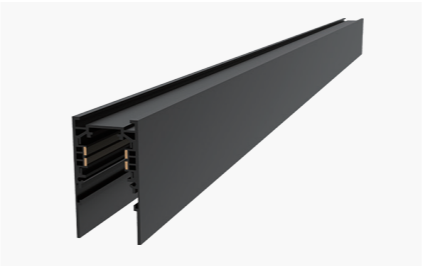
Horizontal splicing Conductors  
Product Model YLP076



## Magnetic L shaped horizontal connector

Recessed Internal Mounted Version

Horizontal splicing Conductors  
Product Model YLP075



## Magnetic Tracking

Surface-mounted Version

1M Version, Mounting holes  
Product Model YLP063



## Magnetic L shaped vertical connector

Surface-mounted Version

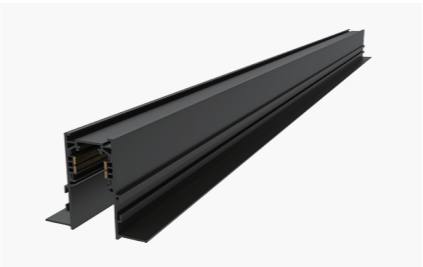
Vertical splicing Conductors  
Product Model YLP065



## Magnetic L shaped horizontal connector

Surface-mounted Version

Horizontal splicing Conductors  
Product Model YLP064



## Magnetic Tracking

Recessed External Mounted Version

1M Version, Mounting holes  
Product Model YLP093



## Magnetic L shaped vertical connector

Recessed External Mounted Version

Vertical splicing Conductors  
Product Model YLP062



## Magnetic L shaped horizontal connector

Recessed External Mounted Version

Horizontal splicing Conductors  
Product Model YLP061



LIGHT SOURCE

# S SERIES TUNABLE LIGHTSTRIP

- | 0.01% Precision of Dimming
- | Low Voltage and Minimal color distortion
- | 120W Isolated Power Supply
- | Dual color COB free from visible particulates
- | Ultra-narrow design
- | No perceptible luminance difference in 20 meters

LIGHT SOURCE S SERIES

# Low-voltage dual-color temperature bare board light strip



Product model	Specifications	Power
YLYDD-0011	10m – bare board	6.5W/m
YLYDD-0012	10m – bare board	10W/m
YLYDD-0023	10m – bare board	6.5W/m
YLYDD-0024	10m – bare board	10W/m
YLYDD-0025	5 m – bare board – narrow version	10W/m

Color temperature	Luminaire flux	CRI
2700~6500K	600lm/m	Ra ≥ 90
2700~6500K	900lm/m	Ra ≥ 90
2700~6500K	500lm/m	Ra ≥ 97
2700~6500K	800lm/m	Ra ≥ 97
2700~6500K	700lm/m	Ra ≥ 90

LIGHT SOURCE S SERIES

# Low-voltage dual-color temperature light strip

COB | Coated

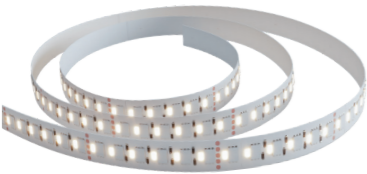


Product model	Specifications	Power
YLYDD-0020	5 m – COB	7W/m
YLYDD-0021	10m – Coated	6.5W/m
YLYDD-0022	5 m – Coated	6.5W/m

Color temperature	Luminaire flux	CRI
2700~6500K	560lm/m	Ra ≥ 90
2700~6500K	700lm/m	Ra ≥ 90
2700~6500K	700lm/m	Ra ≥ 90

LIGHT SOURCE S SERIES

# Low-voltage RGBW light strip



Product model	Product name	Power
YLYDD-0027	10m – RGBW version	14W/m
Luminaire flux	CRI	
700lm/m	Ra ≥ 90	

LIGHT SOURCE S SERIES

# Low-voltage Lightstrip driver

120W | 36W

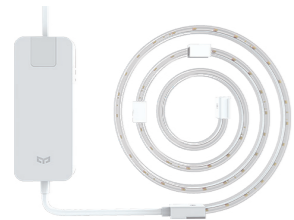


Product model	Product name	Power
YLP042	Low-voltage Lightstrip driver	120W
YP-0137	Low-voltage Lightstrip driver	36W

LIGHT SOURCE S SERIES

# High-voltage Lightstrip

High Power



Product model	Dimming depth	Power
YP-0199 (Light strip)	/	6W/m
YP-0003 (Adapter)	0.02%–100%	120W
Color temperature	Luminaire flux	CRI
2700–6500K	700lm/m	Ra ≥ 90
Dual output	/	/



LIGHT SOURCE

# E+ SERIES RECESSED SPOTLIGHT

- | 12W Brighten villa life

| Yeelight Soft and Clean Mixing Light Technology

| First professional light mixing lens
- | Precise light control    Color tolerance <2

| Deep anti-glare UGR<13    Multiple anti-glare design



LIGHT SOURCE E SERIES

# E+ Recessed Spotlight

Product Model    YP-0330 + YP-0331  
Product size    Φ83×82mm

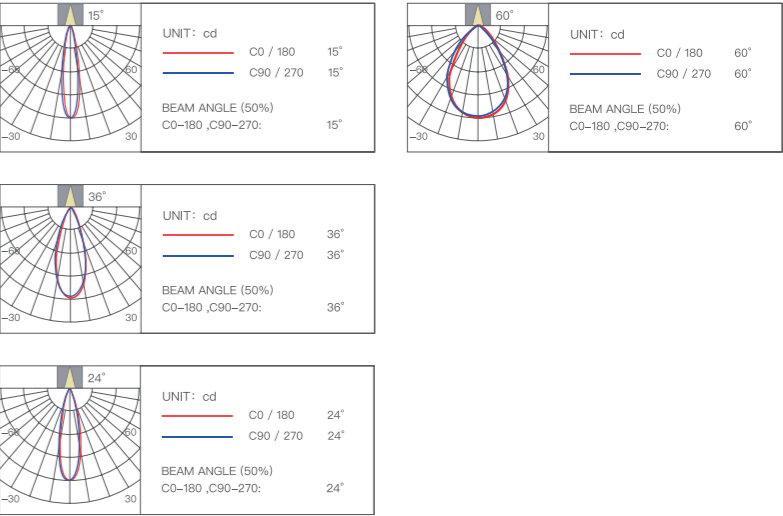


Round Trimless Bezel    Round Bezel

Opening size	Dimming depth	Beam angle
Φ75mm	0.08%–100%	15° / 24° / 36° / 60°

Color temperature	Power	CRI
2700–5700K	12W	Ra ≥90,Ra95@4000K

Luminous flux	
Beam angle	Luminous flux
15°	400 lm
24°	600 lm
36°	600 lm
60°	600 lm



LIGHT SOURCE

## E SERIES RECESSED SPOTLIGHT

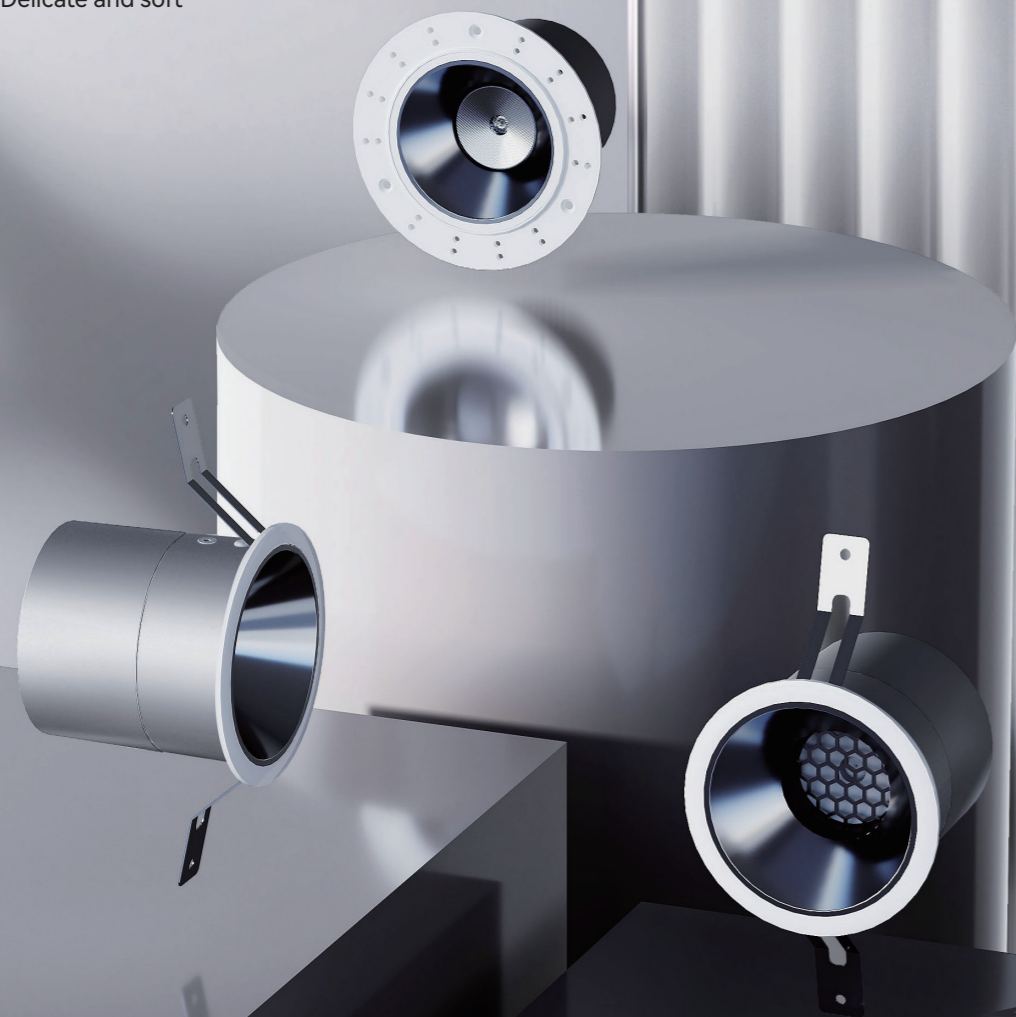
| Yeelight Soft and clean Mixing Light Technology

## Professional Mixing Light Lens

■ Precise light control  
Color tolerance <2

| Multiple Anti-glare

0.01% dimming Delicate and soft

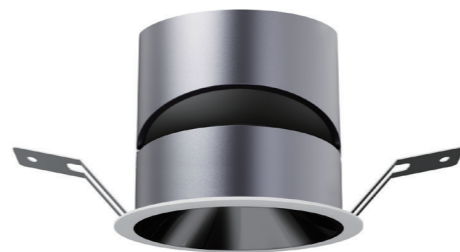


85

LIGHT SOURCE E SERIES

## Recessed Spotlight 3"

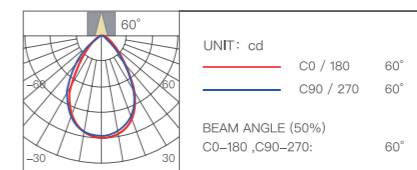
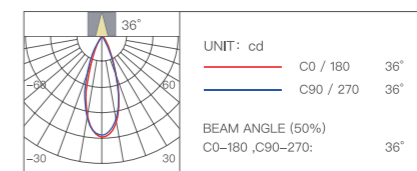
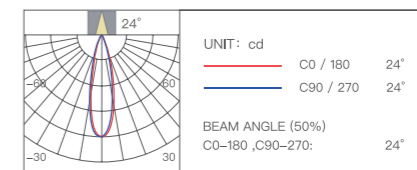
Product Model YLP014 YLP016 YLP030  
Product size Φ83×73mm



Opening size	Dimming depth	Beam angle
Φ75mm	0.08%–100%	24° / 36° / 60°

Color temperature	Power	CRI
2700-5700K	10W	Ra ≥90,Ra95@4000K

Luminous flux	
Beam angle	Luminous flux
24°	600 lm
36°	600 lm
60°	600 lm



LIGHT SOURCE E SERIES

# Recessed Spotlight

Trimless Frame

Product Model YP-0421 YP-0422 YP-0423

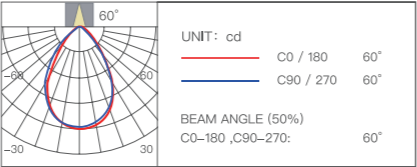
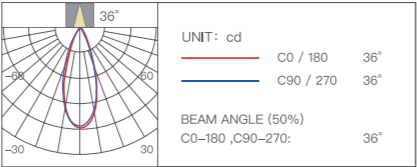
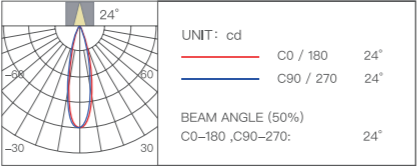
Product size Φ76.5x73mm



Opening size	Dimming depth	Beam angle
Φ80mm	0.08%–100%	24° / 36° / 60°

Color temperature	Power	CRI
2700–5700K	10W	Ra ≥90,Ra95@4000K

Luminous flux		
	Beam angle	Luminous flux
	24°	600 lm
	36°	600 lm
	60°	600 lm



LIGHT SOURCE

# E SERIES RECESSED SPOTLIGHT

Ultra-thin

- | Ultra-thin design

Only 50mm Height
- | New Generation

Ultra Compact Power Supply
- | Ra ≥ 90
- | Precise light control

Color tolerance <3
- | Optional beam angles
- | UDDT 0.01% dimming



LIGHT SOURCE E SERIES

# Recessed Spotlight

Ultra-thin

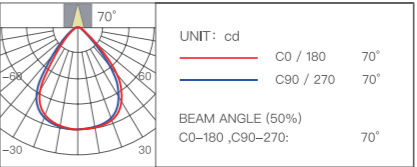
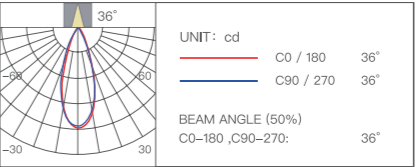
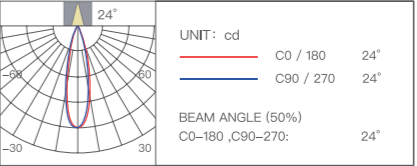
Product size Φ85×50.5mm



Opening size	Dimming depth	Beam angle
Φ75mm	0.08%–100%	24° / 36° / 70°

Color temperature	Power	CRI
2700–5700K	10W	Ra ≥ 90

Luminous flux		
	Beam angle	Luminous flux
	24°	520 lm
	36°	560 lm
	70°	470 lm



LIGHT SOURCE

# E SERIES SURFACE-MOUNTED DOWNLIGHT & SPOTLIGHT

- | Museum light level Ra ≥ 90
- | Multi anti-glare
- | Precise light control
- | Spotlight universal adjustment
- | Infinitely adjustable brightness
- | Multiple control modes



LIGHT SOURCE E SERIES

# Surface-mounted Spotlight

Adjustable angle

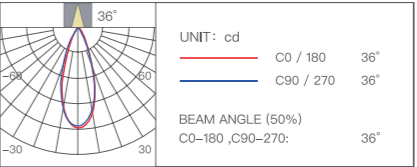
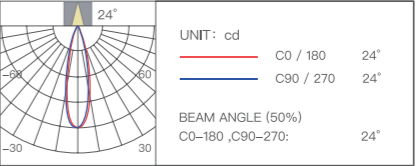
Product Model YP-0304 YP-0305  
Product size Φ80×105mm



Dimming depth	Power	Beam angle
0.1%–100%	10W	24 / 36°

Color temperature	CRI	Color
2700–5700K	Ra ≥ 90	Black/White

Luminous flux	
	Beam angle
	Luminous flux
	24°
	600 lm
	36°
	600 lm



LIGHT SOURCE E SERIES

# Surface Mounted Downlight

Non-ajustable angle

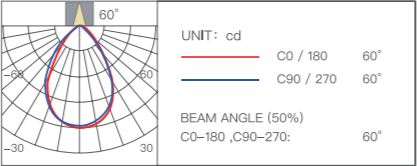
Product Model YP-0419 YP-0420  
Product Size Φ80×105mm



Dimming depth	Power	Beam angle
0.1% -100%	10W	60°

Color temperature	CRI	Color
2700-5700K	Ra ≥ 90	Black / White

Luminous flux		
	Beam angle	Luminous flux
	60°	600 lm





LIGHT SOURCE

# E SERIES RECESSED GRILLE LIGHT

- | Compact Size
- | Super Anti-glare light
- | High Power
- | Deep dimming

LIGHT SOURCE E SERIES

## Recessed Grille Light 6 Heads

Black | White



Product model	Product size	Opening size
YP-0230 (0231)	127×32×40mm	122×27mm
Color temperature	Dimming depth	Power
2700–5700K	0.1%–100%	10W

LIGHT SOURCE E SERIES

## Recessed Grille Light 3 Heads

Black | White

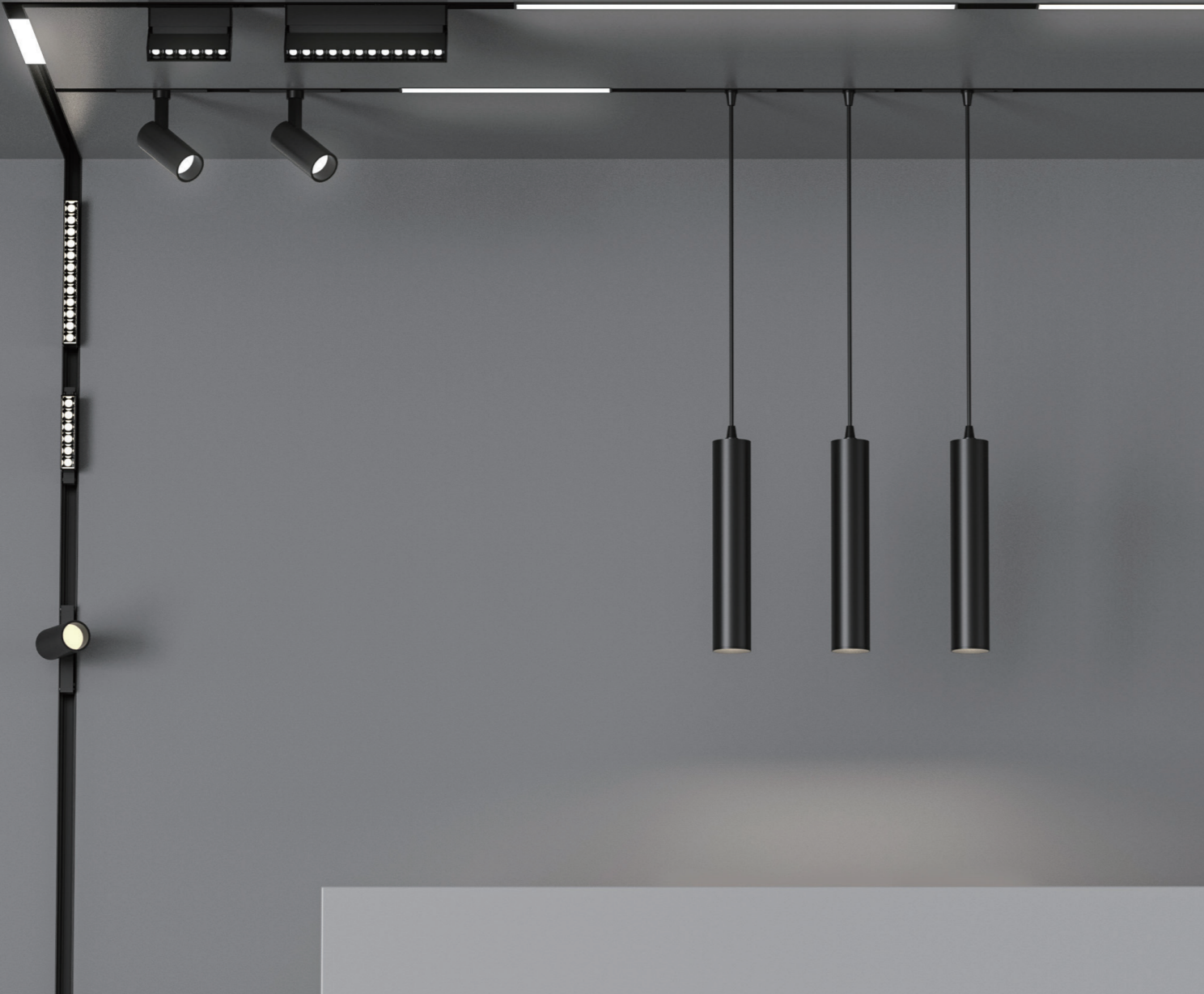


Product model	Product size	Opening size
YP-0226 (0229)	70×32×40mm	65×27mm
Color temperature	Dimming depth	Power
2700–5700K	0.1%–100%	6W

LIGHT SOURCE

# E20 MAGNETIC TRACK LIGHTING

- Ultra-narrow 20 track
- Cost Effective
- 0.1% Precision of Dimming
- Flexible control of each light by BLE MESH



RECESSED MAGNETIC E SERIES

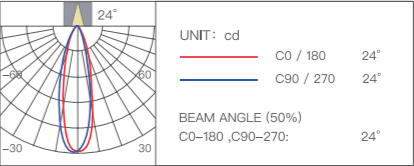
## Magnetic Track Spotlight

Product Model YP-0063



Dimming depth	Power	Color temperature
0.5%–100%	10W	2700–6000K

Luminaire flux	CRI	Beam angle
950lm	Ra ≥ 90	24°



RECESSED MAGNETIC E SERIES

## Magnetic Folding Spotlight

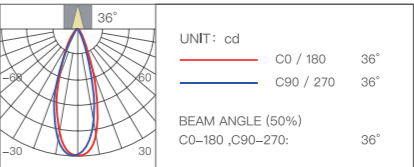
6 heads

Product Model YP-0200



Dimming depth	Power	Color temperature
0.5%–100%	6W	2700–6000K

Luminaire flux	CRI	Beam angle
370lm	Ra ≥ 90	36°



RECESSED MAGNETIC E SERIES

# Magnetic Folding Spotlight

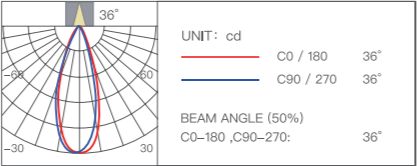
12 heads

Product Model YP-0201



Dimming depth	Power	Color temperature
0.5%–100%	12W	2700–6000K

Luminaire flux	CRI	Beam angle
750lm	Ra ≥ 90	36°

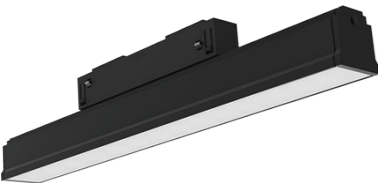


RECESSED MAGNETIC E SERIES

# Magnetic Floodlight

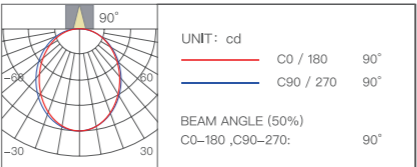
30cm

Product Model YP-0057



Dimming depth	Power	Color temperature
0.5%–100%	6W	2700–6500K

Luminaire flux	CRI	Beam angle
260lm	Ra ≥ 90	90°



RECESSED MAGNETIC E SERIES

# Magnetic Floodlight

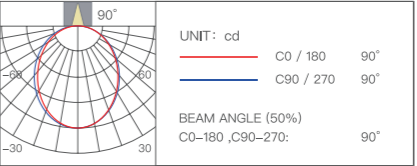
60cm

Product Model YP-0058



Dimming depth	Power	Color temperature
0.5%–100%	12W	2700–6500K

Luminaire flux	CRI	Beam angle
580lm	Ra ≥ 90	90°



RECESSED MAGNETIC E SERIES

# Magnetic Grille Light

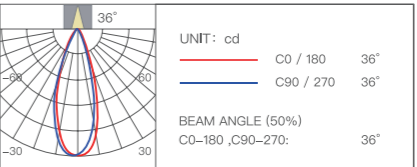
6 heads

Product Model YP-0059



Dimming depth	Power	Color temperature
0.5%–100%	6W	2700–6000K

Luminaire flux	CRI	Beam angle
370lm	Ra ≥ 90	36°



RECESSED MAGNETIC E SERIES

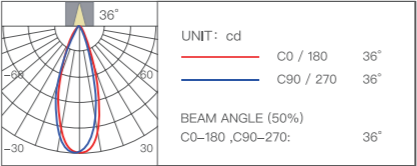
# Magnetic Grille Light

Product Model YP-0060



Dimming depth	Power	Color temperature
0.5%–100%	12W	2700–6000K

Luminaire flux	CRI	Beam angle
830lm	Ra ≥ 90	36°



RECESSED MAGNETIC E SERIES

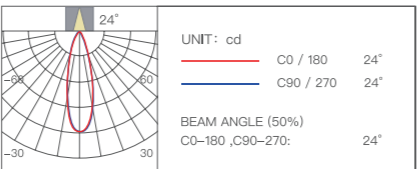
# Magnetic Pendant Light

Product Model YP-0064



Dimming depth	Power	Color temperature
0.5%–100%	10W	2700–6500K

Luminaire flux	CRI	Beam angle
730lm	Ra ≥ 90	24°



RECESSED MAGNETIC E SERIES

# Power Input Connector

Product Model YP-0058

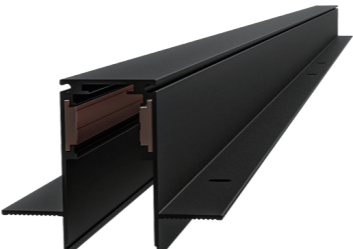


Output voltage	Power
DC 48V	114W

RECESSED MAGNETIC E SERIES

# Magnetic Track

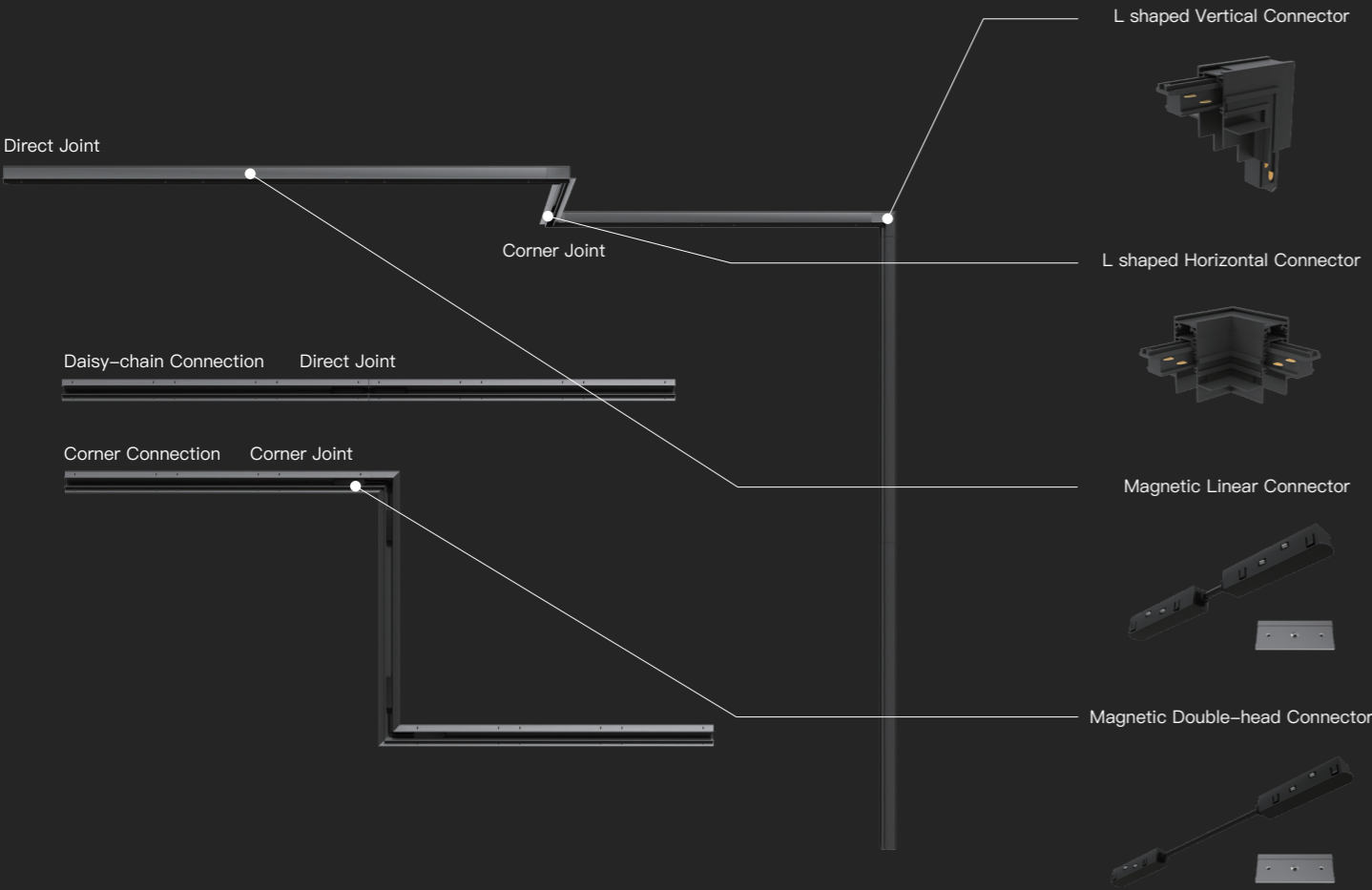
Product Model YLYPJ-0001



Product size	Opening size	Specifications
1000×60×47.5mm	26mm	1M/1.5M

# Schematic Diagram Of Track Connection

Concealed installation, Clean and tidy



ULTRA-NARROW  
20 TRACK

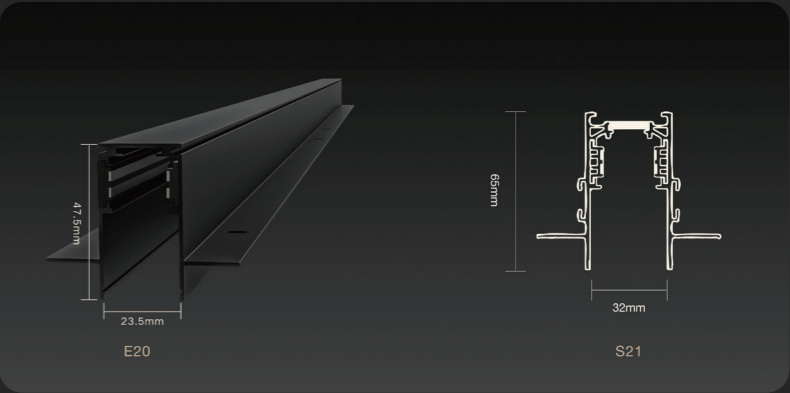
1,000-CLASS  
DEPTH DIMMING

SUPER  
COST-EFFECTIVE

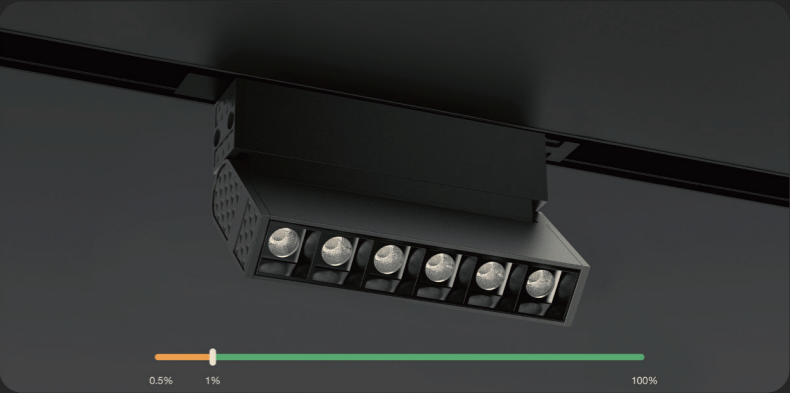
BLUETOOTH MESH  
SINGLE LIGHT  
SINGLE CONTROL

## ULTRA-NARROW 20 TRACK

Narrower, thinner and more cost effective, the track width is 35% narrower and the weight per meter is 40% lighter than that of s21



## 1,000-CLASS DEEP DIMMING





LIGHT SOURCE

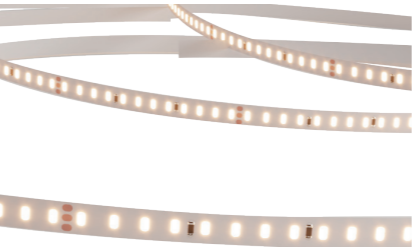
# E SERIES LOW VOLTAGE STRIP LIGHT

- | Infinitely adjustable color temperature
- | 0.01% dimming
- | Multiple control modes
- | Isolated power supply

LIGHT SOURCE E SERIES

# Low-voltage Dual Color Temperature Bare Board Strip Light

Product Model YLYDD-0026



Specifications	Dimming depth	Luminous flux
10m-bare board	0.01% –100%	520lm/m

Color temperature	Power	CRI
2700~6500K	6.5W/m	Ra ≥ 90

LIGHT SOURCE

# E20 BULB LAMP

- | Dimmable and Tunable White Verison
- | High luminous flux
- | RGBW Version
- | Multiple flow modes



LIGHT SOURCE E20 BULB LAMP

## E20 Bulb – warm white



Product size	Power	Color temperature
φ60*116mm	8W	2700–6500K
Luminaire flux	CRI	Specifications
800lm	Ra ≥ 90	E27

LIGHT SOURCE E20 BULB LAMP

## E20 Bulb – RGBW

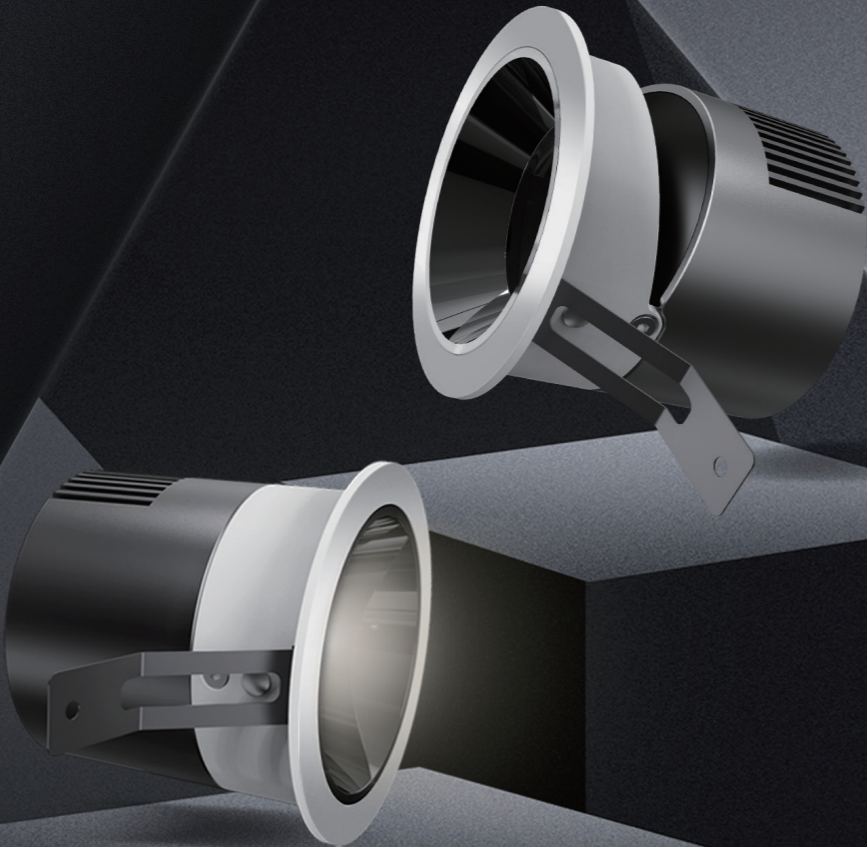


Product size	Power	Color temperature
φ60*116mm	8W	RGBW
Luminaire flux	Specifications	
900lm	E27	

LIGHT SOURCE

# D SERIES RECESSED DOWNLIGHT & SPOTLIGHT

- | Ra95 high color rendering
- | Triple filtered light, further anti-glare
- | Customized COB light
- | All-in-one power supply design
- | Self-developed high luminous efficacy lens



LIGHT SOURCE D SERIES

## Recessed Spotlight 3"

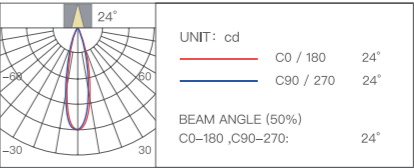
Product Model YLP014+YLP016+YLP030  
Product Size Φ83×72mm



Opening size	Dimming depth	Beam angle
Φ75mm	0.1% –100%	24°

Color temperature	Power	CRI
2700–5700K	8W	Ra ≥ 90,Ra95@4000K

Luminous flux		
	Beam angle	Luminous flux
	24°	480lm



LIGHT SOURCE   D SERIES

# Recessed Downlight 3"

Product Model   YLP014+YLP016+YLP030

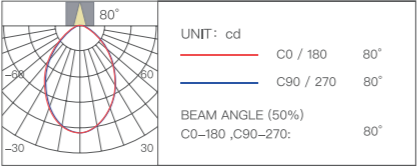
Product Size   Φ83×72mm



Opening size	Dimming depth	Beam angle
Φ75mm	0.1% –100%	80°

Color temperature	Power	CRI
2700–5700K	8W	Ra ≥ 90,Ra95@4000K

Luminous flux		
	Beam angle	Luminous flux
	80°	400lm



LIGHT SOURCE

# M20 SURFACE MOUNTED DOWNLIGHT

- | 2700 - 6500K
- | Ceiling-free Installation
- | Double Anti-glare Design
- | Synergy® Technology



LIGHT SOURCE

# Surface Mounted Downlight

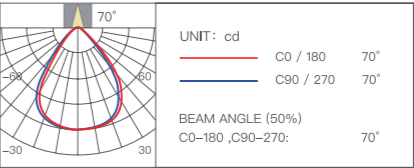
Product Model YP-0019



Product size	Beam angle	Power
Φ71×100mm	70°	4W

Color temperature	CRI
2700-6500K	Ra ≥ 80

Luminous flux		
	Beam angle	Luminous flux
	70°	320 lm



LIGHT SOURCE

# M20 SMART LED BULB(TUNABLE WHITE)

- | T43 Ultrasmall Capsule Bulb
- | 2700K-6500K
- | E27 /E14 Screw Size
- | Synergy® technology



LIGHT SOURCE

# M20 Smart Led Bulb (tunable white) E27

Product Model YLP040



Product size	Power	Color temperature
φ43*112mm	4W	2700-6500K

Luminaire flux	CRI	Specifications
450lm	Ra ≥ 80	E27

LIGHT SOURCE

# M20 Smart Led Bulb (tunable white) E14

Product Model YP-0044



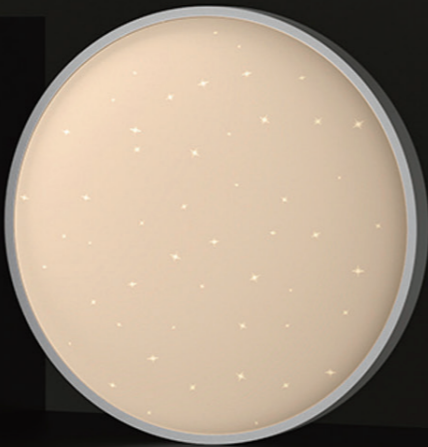
Product size	Power	Color temperature
φ43*112mm	4W	2700-6500K

Luminaire flux	CRI	Specifications
450lm	Ra ≥ 80	E14

LIGHT SOURCE

# M20 CEILING LIGHT

- | Dimming Precision of 0.01%
- | Easy Installation Design with Metal Frame
- | Starry Sky
- | IPX4 Rating with Insect Resistance
- | Synergy® technology



LIGHT SOURCE

# M20 Ceiling Light S500

Product Model YPXDD-0003



Dimming depth	Power	Color temperature
0.01% –100%	50W	2700–6000K

Luminaire flux	CRI
3000lm	Ra ≥ 90

LIGHT SOURCE

# M20 Ceiling Light C450

Product Model YPXDD-0004



Dimming depth	Power	Color temperature
0.01% –100%	50W	2700–6000K

Luminaire flux	CRI
3000lm	Ra ≥ 90



YEELIGHT PRO WHOLE HOUSE SMART LIGHTING   SMART CONTROL

# P20 Panorama Smart Scene Panel



Home center control  
Extra-large Screen

Customized wide screen  
Sound and light linkage

Installation: neutral & live wire

Install size: 86\*86mm

Product size: 324\*166\*15mm

Protocol: Ethernet + Wifi + Bluetooth 4.2

YEELIGHT PRO WHOLE HOUSE SMART LIGHTING   SMART CONTROL

# S21 Smart Scene Panel

Mesh version



Scenario mode customization  
Two-way light control

HD vision, millisecond feedback  
Routing chip

Power input:220V~ 50/60Hz

Product Size:86×86×35.8mm

Maximum load:200W each way (2 ways)

Communication protocol:Bluetooth Mesh



## S SERIES ROTARY TABLE SWITCH

## Color Story



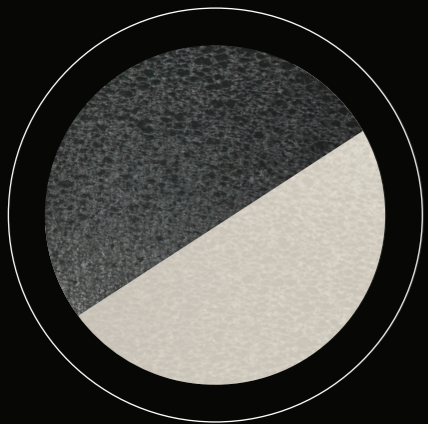
### Porcelain white

As a representative of traditional Chinese culture, the slightly yellow and unadulterated white color is the basic color of porcelain, representing the pure and elegant quality, and also conveying deep cultural heritage. The designer makes the texture of the smart panel even more outstanding through the processing of surface texture details. It is not only for the pursuit of beauty and practicality, but also to convey the essence and charm of traditional Chinese culture through the use of this representative cultural element.



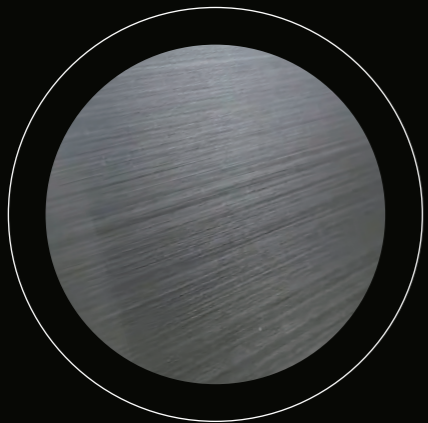
### Ink gray

Inspired by the concept of "ink" in traditional Chinese art. Ink represents a deep, dignified and introspective aesthetic. Ink Gray is a modern, minimalist design based on this concept. Its deep gray hues are derived from the colors of natural materials such as rocks, stones and coal. This color tone is not only stable and introverted, but also contains a sense of mystery and the unknown, making the Ink Gray Smart switch has a sense of fashion and technology.



### Microcrystalline glass printing craftsmanship

Microcrystalline glass panel using a new generation of glass surface treatment technology TMI process, the nano-level texture layer placed on the surface of tempered glass for natural crystal stone texture and feel. The material not only features high strength and anti-pollution, but also has 4758 reflective surfaces engraved per cubic meter, which can present different colors and light effects with the change of light, bringing users a new tactile and visual experience. It is not only a smart home product, but also an artwork worth collecting.



### UV Micro Imprinting

UV refers to the transfer technology that gives the desired three-dimensional metallic texture of the surface. Micro refers to the formation of ultra-fine solid patterns by laser micro-engraving and imprinting refers to overprinting, forming a metallic color texture by overprinting coating, upgrading to 3D effect, combining the wonderful touch of metallic texture to the surface of glass, giving a touch-grade metallic texture, making a perfect combination of visual and tactile sensation with delicate texture.

## S Series Rotary | Scene Panel



### S Series Rotary Switch

- | Two-in-one touch knob
- | 2.1-inch ultra-clear screen
- | Multi-scene control
- | Luxury materials

### S Series Scene Panel

- | Two-in-one touch knob
- | Customized scenario mode
- | Selected luxury materials
- | Micro-movement switch keys

### Product parameter

Installation  
**Naught wire and live wire**

Install Size	Specifications
<b>86×86mm</b>	<b>220V~ 50Hz</b>

Panel material	Product Color
<b>Skin-like glass</b>	<b>Ink Gray</b>
<b>Metallic Glass</b>	<b>Ceramic White</b>
<b>Microcrystalline Glass</b>	<b>Cloud Gray</b>

# E20 Smart Switch



Ultimate minimalist design    Relay/situation mode  
Finger-Friendly design        Familial interaction

Product specification: single/double/triple keys  
Installation: neutral & live wire  
Panel material: PC & hand paint  
Button: Finger friendly  
Product color: white/ gray/ dark blue

# E20 Scene Panel

Neutral & live wire/ Stickable



Minimalist design                Neutral & live wire/Stickable  
Finger-Friendly design        Joint-row frame

Product specification: six keys  
Power supply: neutral & live wire/ CR2032 battery × 1  
Panel material: PC & hand paint  
Button: Finger friendly  
Product color: white/ gray/ dark blue

# M20 Smart Switch



Capacitive screen touch        Relay/situation mode  
AG anti-glare glass panel      Anti-fingerprint

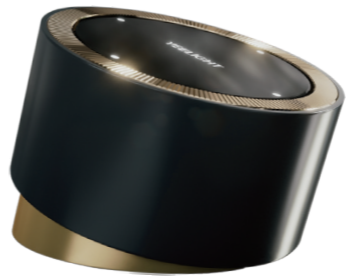
Product specification: single/double keys  
Installation: neutral & live wire  
Panel material: AG glass panel  
Custom backlight: laser engraving  
Product color: white/ black





SMART CONTROL

## E Series Rotary Switch



Silky smooth dimming    Adjustable sensitivity    Two forms  
Multi-scene application    Mechanical texture

Product Model: YP-0157  
Power supply: 2pcs AAA battery  
Product Size: Φ71.6×39.2mm  
Communication protocol: BLE Mesh

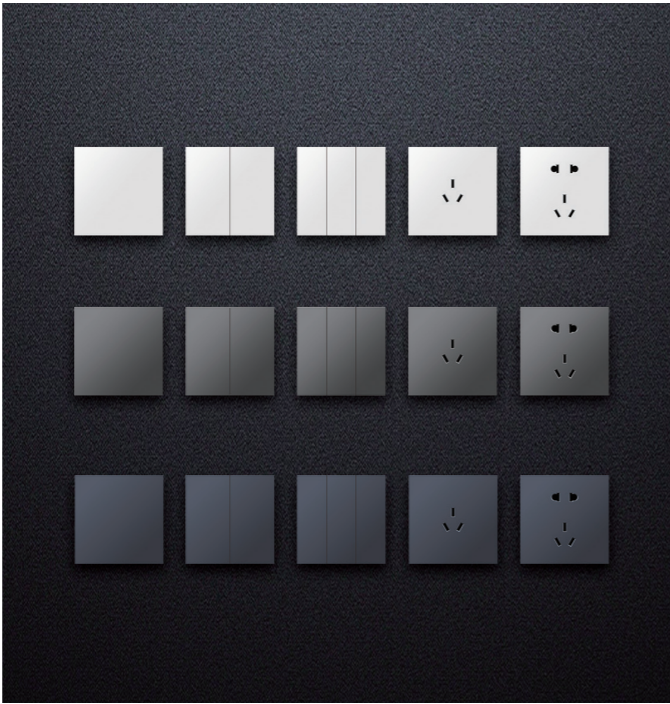
## M20 Rotary Switch



- |                     |                           |
|---------------------|---------------------------|
| Bluetooth Control   | Precise control           |
| Wireless connection | Simplicity and refinement |

Power supply: 2pcs AAA battery  
Product Size: Φ67×34mm

## H-Series Switching Sockets



- |                     |                    |
|---------------------|--------------------|
| Synergy® Technology | Minimalist surface |
| Multi-color         | Safe and durable   |

Product specifications: 1 key / 2 key / 3 keys, three-hole 16A, five-hole 10A, five-hole, Single open, five-hole dual USB, whiteboard, TV plug, network port plug  
Product color: white/ gray/ dark blue

## H Series Human Body Sensor Foot Light



- |                   |                              |
|-------------------|------------------------------|
| Embedded          | Intelligent dual-sensing     |
| Soft light effect | Ultra-low energy consumption |

Sensing mode: light sensing + human sensing  
Rated input: 220V~50Hz  
Power: 0.7W  
Color temperature: 3000K  
Product color: gray / dark blue / white





SENSOR

## P20 Human Presence Sensor



Millimeter wave pulse radar      Easy to install  
micro-motion target detection      Strong battery life

Product size: 48×26×78mm  
Power supply mode: strong power / battery  
Battery specification: CR2477×2pcs  
Battery life: 3 years

SENSOR

## S21 Human Infrared Sensor



Wide angle motion monitoring      Easy to install  
Battery life up to 3 years      Light sensor

Product size: 48×26×48mm  
Battery specification: CR2477×1pcs  
Battery life: 3 years

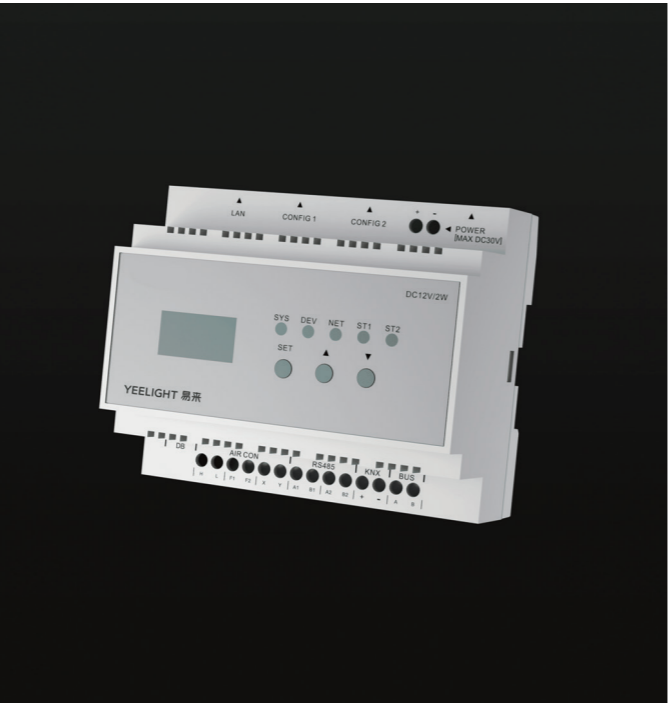
## S20 Gateway (BLE Mesh)



Connected to Mi Home      Routing chip  
Apple HomeKit Compatible      Secure and stable

Rated input: 100-240V AC 50Hz/60Hz  
Connection mode: /  
Connection mode: Network port/Wi-Fi

## S21 VRF Air Conditioner Thermostat



Works with smart scene panel      New timer function  
95% central air conditioning controlled  
Sophisticated interactive interface

Product size: 106×58×91mm  
Power(W): DC12V  
Connection: Bluetooth

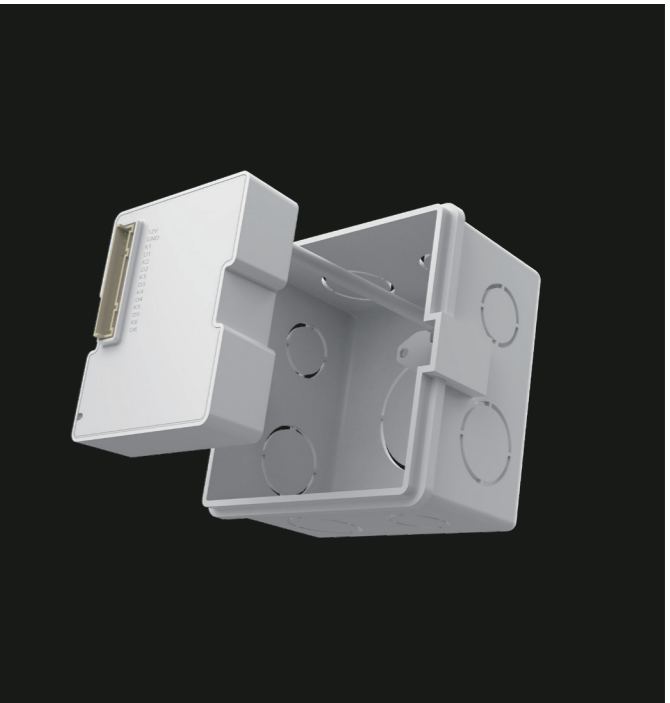
## S20 2way Relay Control Module



Neutral & live wire power supply/  
dual relay      Smart in seconds  
Scenario linkage      Easy to install  
Remote control

Product size: 50×50×34mm  
Number of relays: 2  
Load per circuit: ≤ 200W

## Dry Contact Relay Module



Adaptable to switches within  
six keys      Smart in seconds  
Main power supply      86 box available

Product Model: YPYMK-0001  
Product size: 66×56×18mm  
Wireless connection: Bluetooth  
Rated input: 100~240V~50/60Hz



YEELIGHT PRO WHOLE HOUSE SMART LIGHTING CURTAIN MOTOR

## S Series Smart Blinds



Intelligent scene linkage	< 30dB
179° curtain rotation angle	Tight seams

Input voltage:AC100~240V 50/60Hz max:0.24A  
Rated power:54W  
Otational speed:70r/min  
Rated torque:1.2N.m  
Speed:12cm/s

CURTAIN MOTOR

## S21 Curtain Motor



80KG Curtain fabric load	24cm Exquisite
28dB Super silent	Move slowly

Rated input:100~240V~50/60Hz  
Maximum current:0.3A  
Rated torque:1.3N/m  
Insulation level:Class A  
Protection level:IP40



# 06 CASE

Lighting Design Concept



# Beijing Daxing International Airport

The Daxing Airport Cultural Activity Center is organized into three sections: public area, innovative area and reading area. Yeelight designers tailored multiple smart lighting scenes to cater to each area, creating the ideal learning and social environment for airport staff.



# Beijing Parent-child Grand Flat

Yeelight helped to create a cozy and harmonious home space for parents and children and its intelligent no main light design customized a futuristic space ship, creating a sense of technology in the future child's room, and the rooflight also created a "patio" view to restore the natural real color.



# Suzhou Classical Garden

Suzhou Classical Garden, one of the "Dream Home" projects, it solved the problem of aging building and created a modern and personalized environment. It also utilizes light to blend traditional cultural architecture with modern styles, perfectly interpreting using light to build a standing.



# Dynaudio Brand Store

The style is based on modern mainstream design, the overall presentation of the hard and mature store design, which is carrying up light video combined with the overall space layout, decoration style of the implementation of the case, light design to reduce light pollution at the same time, with sufficient music playback effect, bringing a more immersive surround experience.



## LINJOY Design Center

The LINJOY Design Center is located in Yongyuan Garden, a national non-material cultural heritage. Yongyuan Garden is one of Beijing's most active hubs for designers. Equipped with Yeelight Pro lighting system, the exhibition hall was transformed into a beautiful yet flexible showpiece.



## Chendu Old House Rehabilitation Program

In the project of Chengdu home, Yeelight designers helped to solve the problem of poor space planning and insufficient organization by reducing the illumination drift in different areas, stabilizing the overall color temperature and significantly enhancing the CRI, which created a new, bright and transparent environment for older residence.



# Hefei smart home

This project was located in Hefei, premium residential sector. Yeelight designers re-planned the lighting space of the whole house according to the resting habits of the adults and the interaction needs of the children. The lighting design provided the whole family with a pleasant and immersive soft experience, enhancing the utility of the space.



# Lijiang Nursing Home

Lijiang, China's best leisure city, attracts not only tourists, but also the five retired ladies in our story. Yeelight helped build a smart house with various modes to cater for all lighting requirements and combined on-wall control switch with portable control panel, which is in line with elders' habits while increasing convenience with smart control.





YEELIGHT PRO WHOLE-HOUSE  
SMART LIGHTING SOLUTION